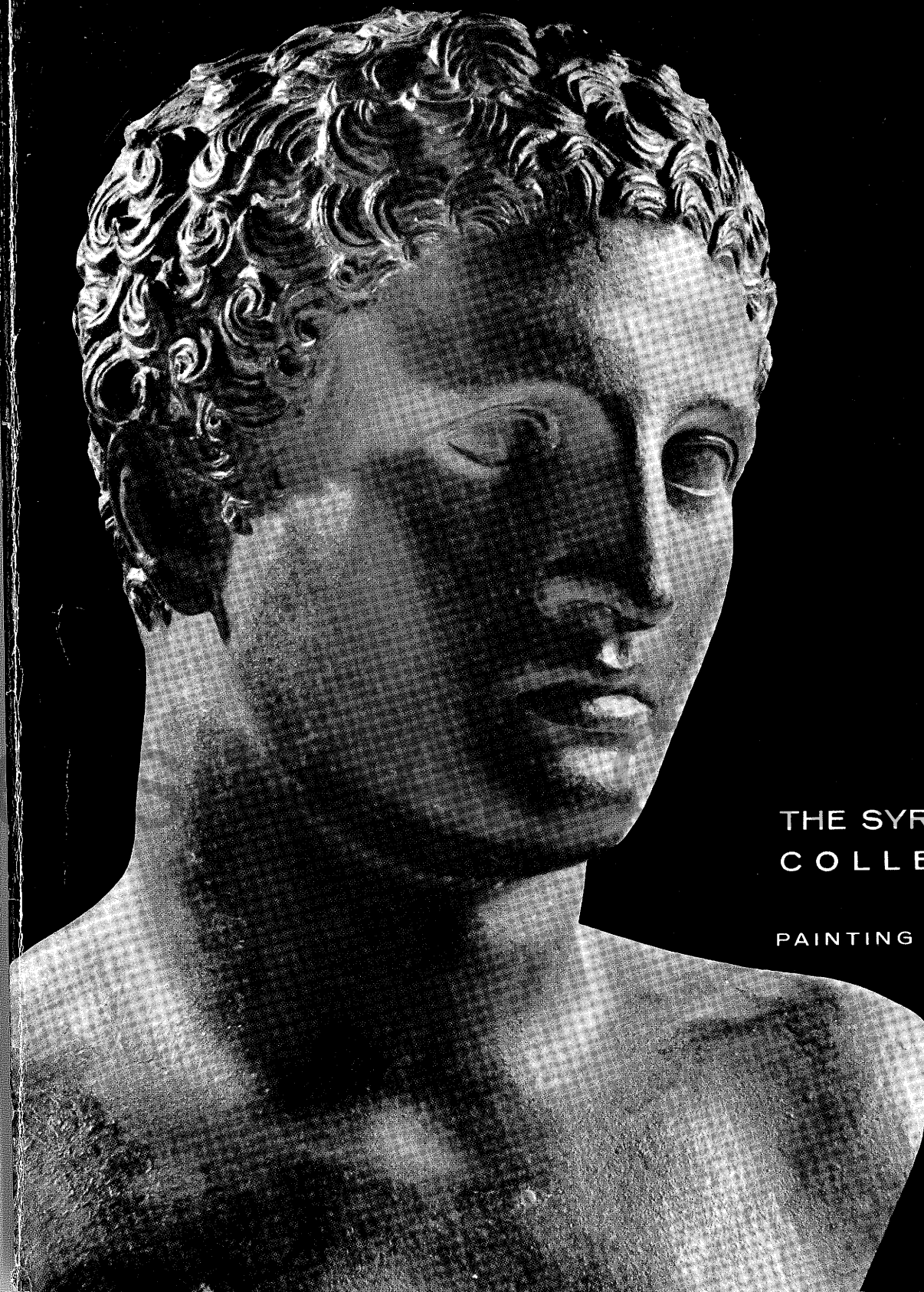


Syracuse Univ



THE SYRACUSE UNIVERSITY
COLLECTION | 1964

PAINTING | DRAWING | SCULPTURE



ty Art Galleries

COVER

HEAD, COPY OF GREEK ORIGINAL (Polykleitos) | Late Roman
Bronze | Height, 14½"

END PAPER

JUDGMENT OF SOLOMON | Flemish, 16th century
Tapestry | 93 x 101"



THE SYRACUSE UNIVERSITY COLLECTION 1964

Syracuse University Art Galleries

THE SYRACUSE UNIVERSITY COLLECTION | 1964

PAINTING | DRAWING | SCULPTURE

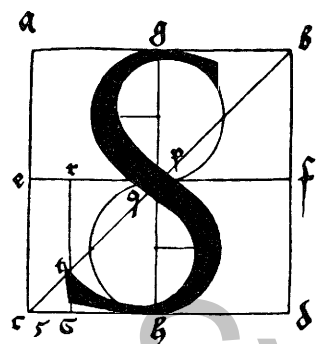
PREPARED BY

LAURENCE SCHMECKEBIER
DEAN | THE SCHOOL OF ART

EDITED BY

ALEXANDRA K. SCHMECKEBIER

SYRACUSE UNIVERSITY | THE SCHOOL OF ART



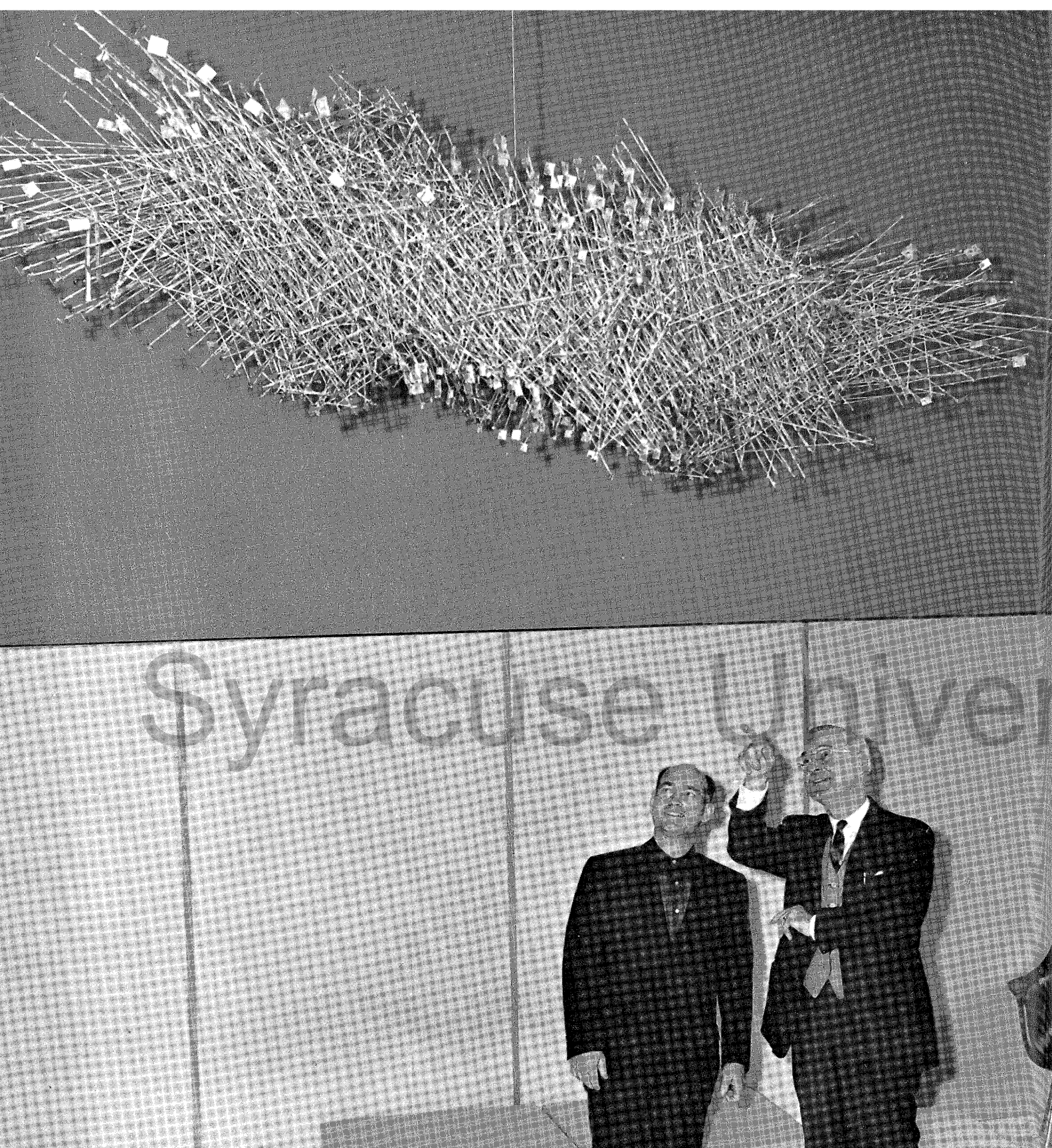
INTRODUCTION	7
EDITOR'S NOTE	14
A NOTE ON GIFTS AND BEQUESTS	17
CATALOG OF PAINTINGS AND DRAWINGS	19
CATALOG OF SCULPTURE	75
SPECIAL COLLECTIONS	88
INDEX OF DONORS	90

Syracuse University Art Galleries

Works reproduced are indicated with an asterisk.

Dimensions are given in inches, height preceding width.

In the case of painting the oil medium is on canvas unless otherwise stated.



BERTOIA, HARRY
SYRACUSE NOVA

Reports of New Acquisitions over the years have become rallying points around which develop new interest and support for the growing Syracuse University Collection. A first report in 1955 listed major works by Ivan Meštrović and George Grosz. That of 1957 revealed the donation of Rico Lebrun's "Crucifixion," John Steuart Curry's "Gospel Train" and Karl Zerbe's "Diesel Engine," along with a number of European Old Masters. The published list of 1960 included well known sculpture and paintings by William Zorach, Charles Burchfield, Max Weber, Ben Shahn, Zoltan Sepeshy, John Rood, Henry Nordhausen and Irene Rice Pereira, as well as the first products of the new mural program in university buildings.

The spectacular rate of acquisition during the past year—nearly 145 items with a value of over \$250,000—has suggested a pause and review of the collection in the form of a tentative catalog which might serve as a guide for future emphasis and development. Beginning with the gift of Samuel F. B. Morse's "Interior of the Louvre" in 1884 and the Lucas Cranach "Judith with the Head of Holofernes" which came with the Leopold von Ranke collection of books in 1888, the collection acquired 27 items during the period 1884-1900. From 1900 to 1940, 33 items, exclusive of student work, were recorded. From 1940 to 1950, 85 works were listed as acquisitions. In the years from 1950 to April 1st, 1964, 225 new works have been added to the collection.

With limited facilities for preservation and storage as well as display, this accumulation would have presented a substantial problem. The donation of the Joe and Emily Lowe Art Center in 1952, and the establishment of an air conditioned fireproof storage vault in 1963, have helped point the way toward a solution. With a growing realization of need and increasing support there is every evidence that a new museum and Fine Arts complex will be a reality by the time Syracuse University celebrates its 100th anniversary in 1970.

As an integral part of that program, the compilation of data in catalog form likewise presents, as Alexandra Schmeckebier has indicated in her introductory remarks, serious problems of recording and documentation, particularly with its wide variety of artistic media, purposes and responsibilities. It is of necessity not complete, but it is a first step through which the historical data can be collected and made available for further study. If, as has so often been said, the vitality of a museum is revealed in its acquisitions, this catalog reflects a remarkably strong institution of which its patrons can be eminently proud.

The art museum is an essential part of the university's educational program and ranks with the library and laboratory, the classrooms and the studio as a basic channel through which its objectives are achieved. As an educational instrument it provides direct and intimate contact between creative minds and large numbers of students. It serves as an agency for the preservation of great artistic accomplishments of both past and present. It serves likewise as a center for the exchange of ideas, the cultural stimulation, and spiritual enrichment of both students and the community.

The background for this development lay in the distinctly favorable cultural climate traditional to Syracuse University. With the establishment of its College of Fine Arts in 1870, Syracuse became the first university in America to grant an academic degree for a professional course in art under the eminent George Fisk Comfort, its first dean and one of the founders of New York's Metropolitan Museum. Today, its Chancellor William P. Tolley and the members of the University's central administration have kept that tradition dramatically alive through their personal interest and active encouragement. To our distinguished Chancellor, along with former Vice Chancellor Finla Crawford, Vice Presidents Frank P. Piskor, Newell Rossman, John F. Olson, Clark D. Ahlberg, and Francis A. Wingate, we should like to express our deepest gratitude for their genuine cooperation.

While policy is set by the administration, its implementation is possible only through the loyal support of many friends and patrons. These include prominent members of the Board of Trustees, an ever-increasing number of Alumni supporters, members of the Faculty, parents of students, members of the Syracuse community, interested friends and patrons and many of the artists themselves. Certainly one of the most remarkable chapters—as yet unwritten—in the history of American Art is the role played by the artists as supporters and patrons of the fine arts, not necessarily for their own advantage but for the cultural welfare of the community.

The line of contact between museum and patron is a two-way proposition which is kept alive through the exhibitions and the publications made possible through donations. During the past two years attractive catalogs of major exhibitions have been published, including that of Syracuse University's unique collection of Contemporary Japanese Ceramics, those of the biennial American Printmakers' competitions, and the recent Masterpieces of African Sculpture. With the exhibition program for the coming year are projected catalogs of our distinguished Cloud Wampler Print Collection, the John R. Fox Collection of Korean Ceramics, and a major collection of Contemporary Scandinavian Design. Thus personal pride in watching the growing effectiveness of their donations and the federal tax program form the unique partnership of individual gift and indirect government support which is now established as an essential part of the American cultural pattern.

The rising interest of the Syracuse community in the university museum and its program of exhibitions is shown in the attendance figures of the past decade. From an initial 10,000 recorded in 1955-56 the attendance has grown to well over 80,000 in the past year, 1963-64. Student interest has increased but a closer analysis indicates that nearly 50% of the visitors to the galleries were from outside the academic circle. During the summer months the drop in student and community attendance is matched by an increase in the number of tourists who see the art center as one of the major attractions in the city of Syracuse.

In the building of a fine arts collection there are certain guide lines which we try to follow. They are not unique in the museum world but are the direct result of the experi-

ences and necessities of our own institution. In the first place we need good examples of original works of art as a regular part of our teaching program. Books on the history of art are essential but the reproductions which they contain must not be mistaken for the real thing.

The teaching of art, like that of any other discipline, involves a planned series of problems which embrace the endless repertoire of media and techniques, style and personal expression, the basic forms of design, and the requirements of professional practice. One needs examples of other solutions on hand, not so much to copy or repeat, but rather to live with and experience so that each solution opens new possibilities, which in turn lead to other problems in a continuing process of development.

Hence an adequate collection can demonstrate the growth of the individual artist as well as his society. It is only through consciousness of growth that the young artist can achieve that form of personal conviction and confidence which will equip him to face the world and its creative responsibilities.

The development of the Syracuse University Collection is closely coordinated with the acquisition program of the University Library. This involves the acquisition of books to support the general history of art program and the scholarly research associated with the museum's new acquisitions. It also involves the collection of rare books as well as manuscripts, drawings and the personal papers of the various artists. These are carefully maintained in the Manuscript Department and Lena R. Arents Rare Book Room of the Library system. These become invaluable resources for both the undergraduate student and the skilled researcher for scholarly purposes.

Our major interest of course has been in American art, partly because it is our responsibility to support our own artists and partly because the European old masters, both old and contemporary, are simply out of our financial reach. As we see it in the exhibition gallery and as we teach it in the studios, art is not painting alone, but includes ceramics, silversmithing and metal work, weaving, sculpture, graphic arts, and the various forms of professional design for business and industry.

In our experience the "museum without walls" is not a revolutionary concept but a logical part of our educational program as witnessed by the Meštrović and Zorach sculpture

outside of Lowe, the Lebrun Crucifixion which dramatizes the reading room of the main library, the large frescos by Charlot and Marx in Shaw and Flint dormitories, Fred Conway's abstract mural in Lowe Art Center, Anton Refregier's important mural in Watson dining hall, Hudson Roysher's sterling silver University mace, and Peter Piening's designs of our museum bulletins.

In building a collection one must be aware of the fact that even in the art which we are pleased to call "contemporary" there are many variations in both form and content as well as purpose. The artist has every right to experiment in an abstract form. He can give vent to his personal feelings as in the monumental contortion of Meštrović's "Job" or the raging action of a New England hurricane in Pollock's "Fury." A well painted or monumentally conceived portrait still has a legitimate and necessary function in our society and the recognizable subject matter is, as always, an effective form of communication provided it is artistically well done.

The aesthetic control of a museum collection is virtually impossible, especially when it is an integral part of an energetic and creative educational institution. Nor is it desirable since the end product reflects a depth of knowledge and variety of taste, experience and resources as boundless as modern education itself. Leadership in education and, in our case, guidance in collecting is both practical and inspiring, particularly when the institutional objectives are understood.

Surplus class funds and a group desire to be remembered have left monuments in the form of granite boulders and park benches as class memorials over many a campus, including that of Syracuse University. By way of contrast and an indication of the new trend toward artistic awareness, the class of 1955 chose Ivan Meštrović's bronze Persephone as its project. Today this magnificent symbol of liberation has become one of the most cherished monuments on the Syracuse University campus. It was a group of forward looking art student members of Chi Omega Sorority which sparked the drive for Harry Bertoia's Syracuse Nova in the main lounge of the Huntington Beard Crouse building.

Contemporary trends in architecture have stripped our modern buildings of decorative enrichment once considered essential to a complete and satisfactory sense of style. The

result has been the aesthetic poverty we recognize in the glass canyons of our cities and the concrete skeletons of our educational centers throughout the nation. In our situation the economics of necessity are indeed recognized but the possibilities of enrichment through works of art are likewise given due consideration. The slow but steady progress we have made toward the acquisition of major works of sculpture for architectural settings during the past ten years carries endless promise for a great and artistically significant university campus.

It was with this thought in mind that the university initiated the mural program several years ago. Inspired by the Whitney Foundation’s gift of Lebrun’s large-scale “Crucifixion,” a series of well-known artists were invited to the campus to execute mural decorations in certain campus buildings. The artists were given complete freedom to paint what and how they wished, the only restriction being that qualified graduate students selected by the artist might have the privilege of working with him as apprentices and that the student public have the opportunity to watch its progress. The result was not only a series of significant additions to the university collection, but an enviable educational experience for both future artists and consumers.

With the staggering scale of the responsibilities thrust on our educational institutions today, all universities suffer from handicaps and limitations. Syracuse is no exception, but a handicap can often be turned into an advantage where a deeper concentration of will and effort furnishes the drive for superior achievement. The widespread encouragement and support of the sciences in our educational institutions is a great accomplishment but it is even more inspiring to see how many strong and culturally-minded individuals and friends of the University have rallied to the support of the artist and the creative spirit which is his essential being. The evidence of such interest and generosity revealed in this growing collection lends positive assurance of an artistic Renaissance of unparalleled significance.

LAURENCE SCHMECKEBIER
DEAN | THE SCHOOL OF ART



RUBENS, PETER PAUL

BRISEIS RESTORED TO ACHILLES

The problems of a research editor sometimes appear much simpler when dealing with records of Renaissance Italy than with those of our own immediate past. The historical conscience of each institution, like that of a family, seems to vary according to the generation. The one may carefully record events of the time, the next, in a revolt against tradition, may neglect and disparage what has gone before, while a third may cherish its inheritance and awaken too late to make up for the neglect.

The tragedy of loss by destruction or neglect in the great periods of the historical past can always be explained. However, that does not relieve us of the responsibility for the preservation of the art of the present and of our immediate past, as well as for the recording of the factual data associated with it.

Given the available records and the time to search deeply enough, there are often fascinating discoveries to be made. A nineteenth century painter, now pushed into oblivion, may have had a recognized and successful career; while his neglect as an artist may be deserved, his significance as an expression of his period may be highly important. Similarly, there are many artists who were neglected by their times and now are discovered to have great talent and potential.

The complications are enormous, and even the search for the facts can be frustrating. The overwhelming numbers and geographical distribution of people practicing art within the past thirty years have made the recognition and survival of all of them almost impossible. Each region has its group. Each school possesses notable teachers. Artists move in from foreign countries while natives migrate abroad. So much production, exhibition and marketing has been taking place at such speed that responsibility and reliability of recording have not kept pace. Magazine reviews, journals and directories do not and cannot cover the entire field. Careers blossom sensationallly, and the indexes of only a few years

ago do not reveal the origins of those currently riding the crest. Others who were equally competent, had long worked in obscurity, and then suddenly appear as stars in the market, due to an unexplained twist of fate or promotional campaign.

From what then does one construct a record? No matter how conscientious the intention nor how painstaking the effort, there are bound to be gaps, variations, contradictions and unfortunate omissions. Errors will appear and one can only hope that with this checklist, which is an attempt to assemble and record the factual material of a significant collection, the efforts will be continued to achieve a permanent and scholarly catalog.

Several previous surveys have laid a groundwork for the present cataloging research. In December 1947 a Committee on University Works of Art, composed of Professors Hibberd Kline, Sr., William Hekking and Harry Hilberry, submitted a report on the works of art about the campus, with their valuation. In 1959, a tentative check-list was made by Professor Donald Waterman, listing the works and their locations. In 1962, Miss Abigail Booth spent a year checking and investigating everything in the rapidly expanding Syracuse University Collection. Thanks to her establishment of a professional museum registration system, it was possible to proceed with further research and documentation and to create a master file of acquisitions and donors.

With the projected cataloging of the print, ceramics, textile and other decorative art collections Syracuse University will achieve a major resource for the use of its total collection in an expanded program of research and general education.

ALEXANDRA K. SCHMECKEBIER



Gifts and bequests to SYRACUSE UNIVERSITY are deductible in computing income or inheritance taxes under the laws of the State of New York and the United States of America for contributions to tax-exempt educational institutions.

The University's Counsel, the Dean of the School of Art, and the Director of Deferred Giving Programs are glad to make themselves available for confidential consultation on gifts and bequests to the University.

Under the new Federal tax laws, a donor may make a gift to Syracuse University which would exceed, in value, the regular 30% of adjusted gross income limitation. The value in excess of the 30% of adjusted gross income for all such gifts in one year would be carried forward for up to five additional years—until the gift was "used up."

Also, a donor is permitted to give a work of art a fraction at a time. For example, if the owner of a painting gives the University one quarter of his equity in the painting he may take a tax deduction based upon one quarter of the value of the painting provided he surrenders to the University the right to possess the work one quarter of the time, that is, three out of every twelve months of the year. Later, at his convenience, he may give the University another fractional interest in the picture, taking a proportionate tax deduction and surrendering rights of possession for a proportionate additional length of time, and so on until the gift is completed. The University is, however, not obligated to take possession of the gift even though it must have the right to do so.

Anyone interested in further information on these methods of making donations should consult his own tax advisor for the exact language of these provisions and their effect on his particular tax situation. At the present time the maximum amount of donations made to organizations such as the University that can be deducted in any one year is limited to 30% of adjusted gross income.

A good many collectors have disclosed privately to the University the list of works of art which they intend to give or bequeath to the University. This is a courtesy of great value to the University in forming its collections even though it is understood that unforeseen circumstances may later necessitate a change of intention.



RAVESTEYN, JAN ANTONISZ VAN
MAURICE DE NASSAU

ADAMS, WAYMAN

American, 1883-1959
A NEWCOMER TO THE UNITED STATES
Oil | 22 x 18"
GIFT OF MRS. WAYMAN ADAMS | 1959

NOT A MEMBER OF THE CLUB | 1951
Oil | 32 x 27"
GIFT OF MRS. WAYMAN ADAMS | 1959

AIZPIRI, PAUL

French, born 1919
STILL LIFE
Oil | 23½ x 28¾"
GIFT OF ARNOLD GRANT | 1958

FLEURS AVEC OISEAU BLEU
Oil | 39½ x 28¾"
ACQUIRED 1963

ANONYMOUS

HEAD OF CHRIST | German, 18th century
Tempera on panel | 6½ x 4¼"

KAYASSI KAYKHOSRO, OR CYRUS THE GREAT | Persian
Watercolor | 9¼ x 6⅞"
GIFT OF FRANK E. MILLER | 1959

RUSTAM FIGHTING AFRASIYAH OF TURAN | Persian
Watercolor | 9¾ x 6⅞"
GIFT OF FRANK E. MILLER | 1959

JONATHAN T. CRANE
Oil | 24 x 20"
GIFT OF MISS EDITH CRANE | 1959

ERASTUS F. HOLDEN
Oil | 24 x 20"

JAMES TEN EYCK
Oil | 37 x 27½"

MRS. FRANCES JANE HOLLAND VAN ALLEN
Oil | 25 x 20"
GIFT OF JOHN CUNNINGHAM | 1936

FRANK R. WALKER
Oil | 30 x 25"

ANDREWS, HANNAH SESSIONS

American, 1889-1961
PAUL SHIPMAN ANDREWS
Oil | 30 x 26"
ACQUIRED 1959

ARANDA, JOSÉ-JIMENEZ

Spanish, 1837-1903
SHARPENING THE QUILL | 1889
Oil on panel | 14 x 10½"
GIFT OF GEORGE ARENTS

ARMISTEAD, HORACE

American, contemporary
STILL LIFE ON TABLE | 1930
Oil | 27 x 22"
GIFT OF JAMES F. CARR | 1962

NUDE | 1939
Oil on panel | 16 x 20"
GIFT OF JAMES F. CARR | 1962

ASCH(EMEIER), STAN(LEY) WM.

American, born 1911
TWO ROOSTERS | 1957
Oil | 27½ x 19¾"
GIFT OF ARNOLD GRANT | 1962

BELA
Elizabethville (Congo)
GOLDFISH | 1958
Tempera | 16 x 20"
GIFT OF GERRY DIETZ | 1958

BENNETT, JENNIE MAE

American (S.U. 1917)
WILD FRUIT TREES
Oil on masonite | 20 x 24"
GIFT OF THE ARTIST | 1958

BENSON, W. H.

English, 19th century
THE STAG
Oil on panel | 3½ x 7½"
GIFT OF GEORGE ARENTS

BÉRAUD, JEAN
French, 1849-1936

GIRL IN FENCING COSTUME
Oil on panel | 21¼ x 13¾"
GIFT OF GEORGE ARENTS

BERNE-BELLECOUR, ÉTIENNE-PROSPER
French, 1838-1910

CALVARY OFFICERS
Oil | 18½ x 22"
GIFT OF GEORGE ARENTS

BIERSTADT, ALBERT
American, 1830-1902

ALBINO DOE AND TWO FAWNS IN WOODS
Oil | 21½ x 29"
GIFT OF GEORGE ARENTS

BLANCH, ARNOLD
American, born 1896

FLORIDA SWAMPLAND | 1948
Oil | 30 x 48"
ACQUIRED 1963

*FLOWER MAKERS | 1938
Oil | 36 x 50"
ACQUIRED 1963

BLATAS, ARBIT NICOLAI
French, born 1909

LA PLACE, ARET
Oil | 25½ x 32"
GIFT OF ARNOLD GRANT

BLÖMMERS, BERNARDUS-JOHANNES
Dutch, 1845-1914

INTERIOR WITH WOMAN WASHING
Oil | 16 x 19¼"
GIFT OF GEORGE ARENTS

BOEHNER, MARGARET HUNTINGTON
American, born 1894 (S.U. 1920)

VIEW OF WHARF, GLOUCESTER
Watercolor | 14 x 21"

SHIPYARD
Watercolor | 14½ x 22½"

THE BRIDGE, YATES CASTLE IN 1904
Ink and gouache | 18½ x 24½"
ACQUIRED 1956

YATES CASTLE, 1904
Wash drawing | 17¾ x 22¾"
ACQUIRED 1956

BOGARDUS, JAMES
American, 1800-1874

JOHN CROUSE | 1872
Pastel | 53 x 37"
GIFT OF JACOB CROUSE | 1889

MRS. JOHN CROUSE | 1872
Pastel | 53 x 37"
GIFT OF JACOB CROUSE | 1889

BOHROD, AARON
American, born 1907

LANDSCAPE
Pen, brush and ink | 10 x 17"

*RED CABBAGE | 1961
Oil on panel | 17½ x 23½"
ACQUIRED 1962

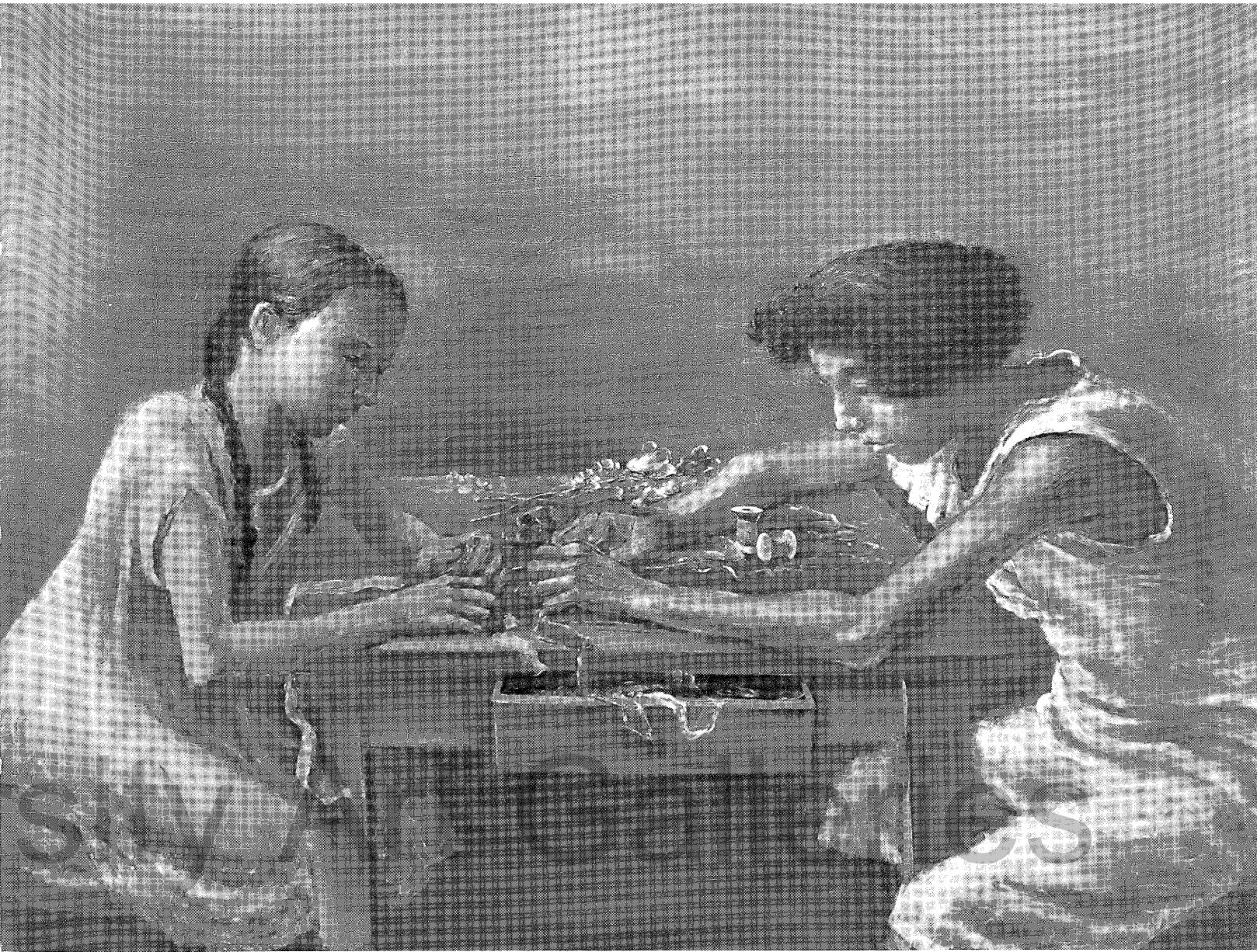
BOSA, LOUIS
American, born Italy, 1905

CAFÉ SCENE | 1958
Ink on blotting paper | 12 x 19"
GIFT OF THE ARTIST | 1958

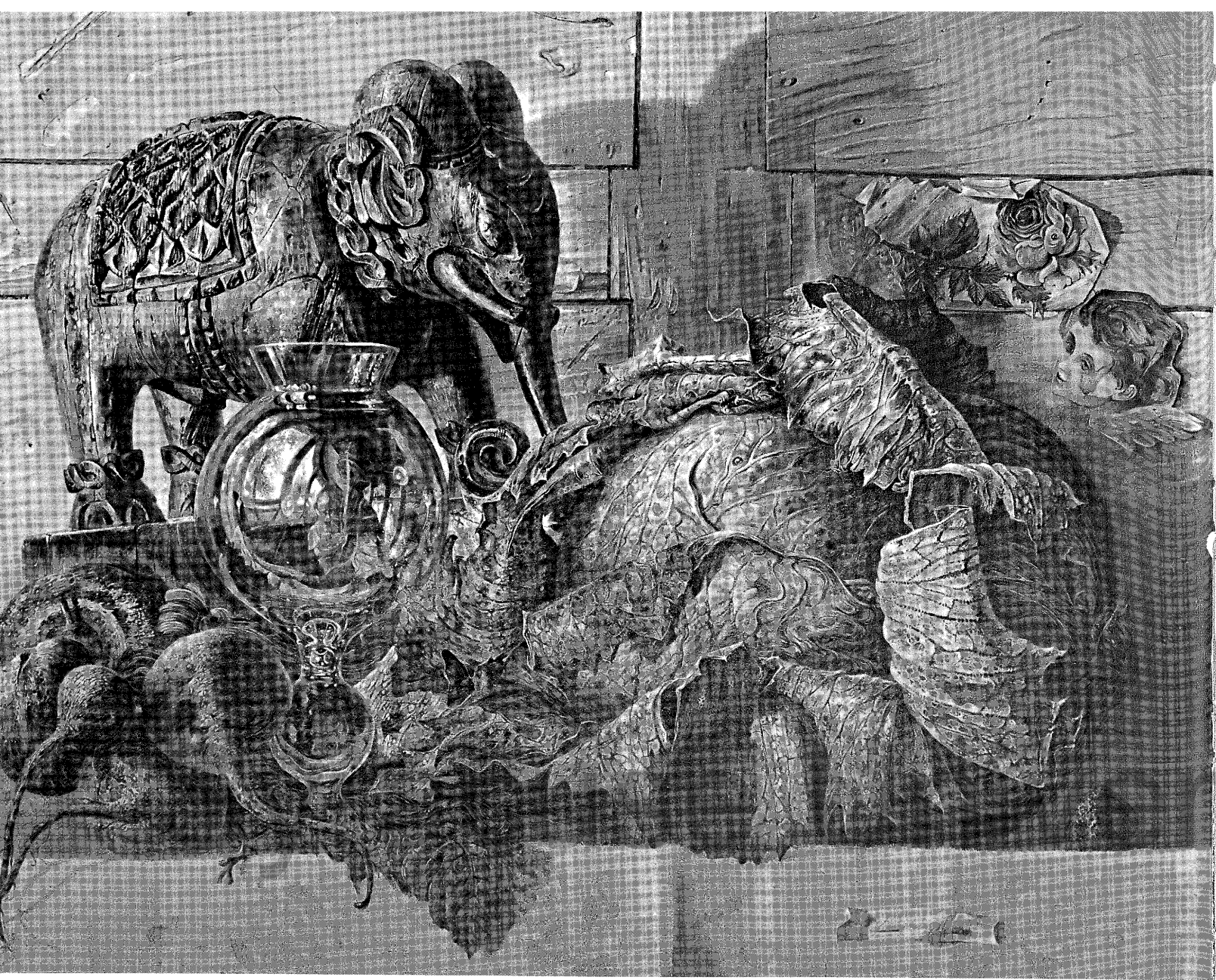
*THE SECRET | 1959
Oil on panel | 28 x 17"
ACQUIRED 1962

SERENATA IN VENICE | 1962
Oil | 30 x 50"
ACQUIRED 1962

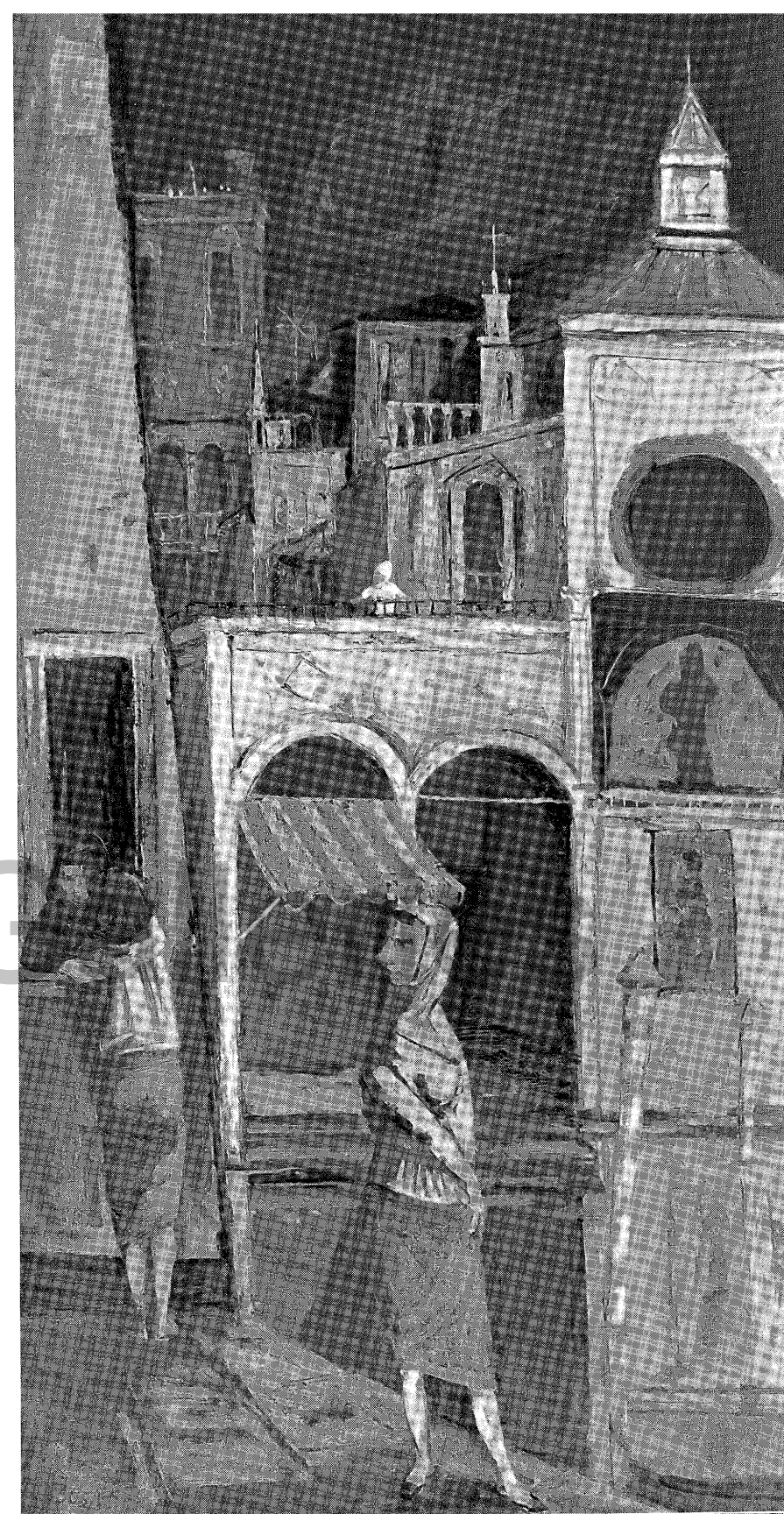
SKATERS | 1960
Oil on panel | 8½ x 24½"
ACQUIRED 1962



BLANCH, ARNOLD
FLOWER MAKERS



BOHROD, AARON
RED CABBAGE



BOSA, LOUIS
THE SECRET

BOUGUEREAU, WILLIAM ADOLPHE

French, 1825-1905

PETITES MENDICANTS | 1890

Oil | 62½ x 36¼"

GIFT OF MRS. C. MICHAEL PAUL | 1960

SEATED WOMAN

Oil | 39½ x 29½"

GIFT OF GEORGE ARENTS

BOUTIN, JEAN

IN THE PARK | 1947

Oil | 21½ x 26"

GIFT OF ARNOLD GRANT | 1959

BRAUN, MAURICE

American, born 1877

EUCALYPTUS

Oil | 25 x 30"

GIFT OF GEORGE MAXWELL

BROOKS, AVIS

(S.U. 1933)

STILL LIFE WITH FLOWERS

Watercolor | 17¾ x 22½"

GIFT OF MRS. WILLIAM E. ALLIS

STILL LIFE WITH FRUIT

Watercolor | 22 x 18"

GIFT OF MRS. WILLIAM E. ALLIS

STILL LIFE WITH PUMPKINS

Watercolor | 19½ x 25½"

GIFT OF MRS. WILLIAM E. ALLIS

BUFFET, BERNARD

French, born 1928

FLOWER STILL LIFE | 1953

Oil | 13 x 9¼"

GIFT OF ARNOLD GRANT | 1958

BULMER, ELENORE STUART

American, born 1914 (S.U. 1936)

LILACS

Watercolor | 19½ x 16"

ACQUIRED 1936

BURCHFIELD, CHARLES E.

American, born 1893

*SUN, MOON AND STARS | 1920-55

Watercolor | 37½ x 54½"

ACQUIRED 1958

BURGESS, JOSEPH

American, 1890-1961 (S.U. 1914)

JUNE BURCHIT BURGESS

Oil | 29½ x 23¼"

GIFT OF MRS. JOSEPH BURGESS | 1964

BURKE, AINSLIE

American, born 1922

SPRING LANDSCAPE | 1963

Oil | 50 x 40"

GIFT OF VICE PRES. AND MRS. FRANK P. PISKOR

ISLAND DUNES | 1964

Drawing | 22 x 30"

GIFT OF THE ARTIST | 1964

BURLIUK, DAVID

American, born Russia, 1882

FISH WOMAN FROM CORTEZ | 1947-63

Oil | 20 x 23½"

GIFT OF THE MARTIN FOUNDATION | 1964

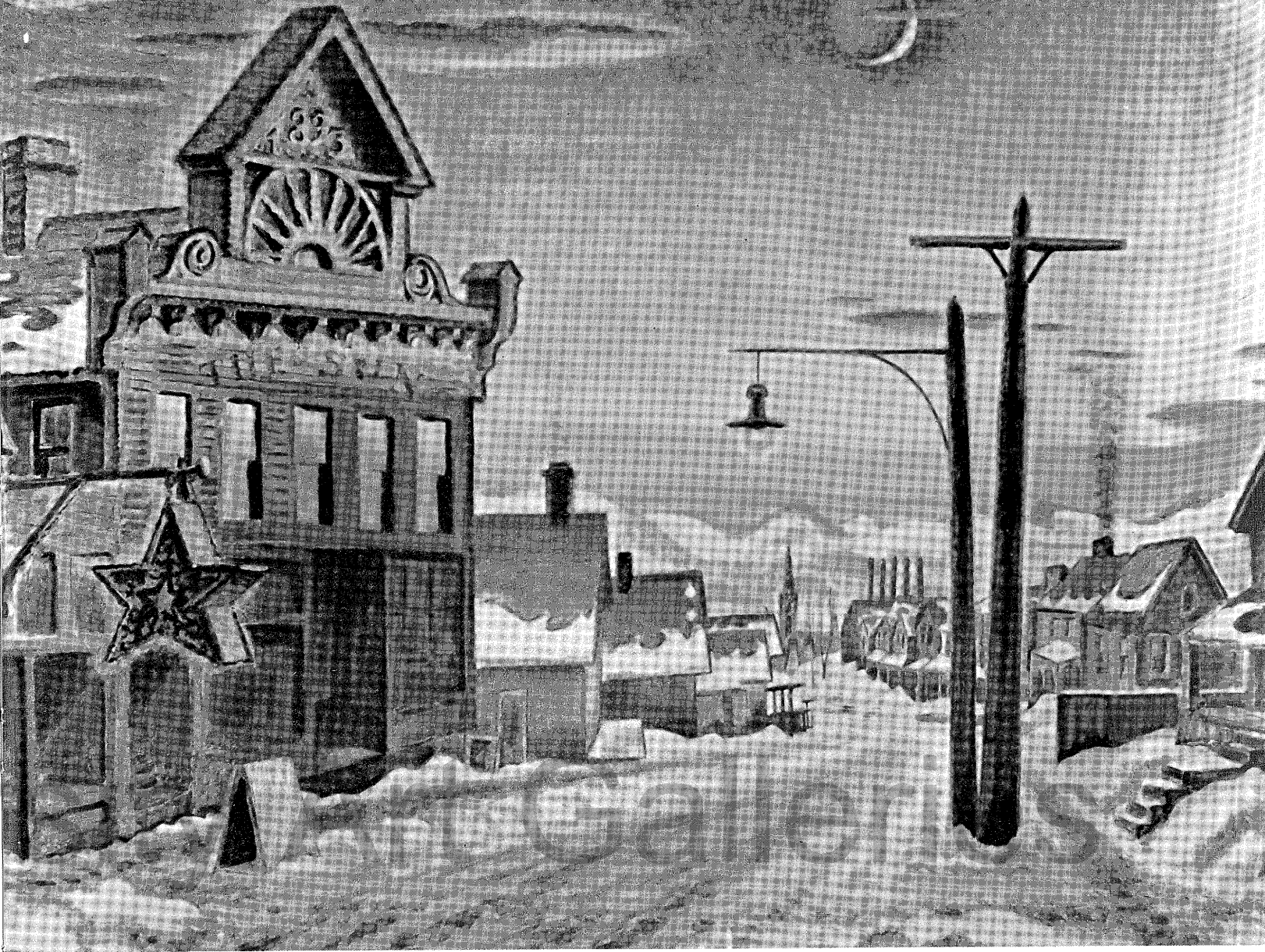
CANDELL, VICTOR

American, born Hungary, 1903

THE BIG ONE | 1964

Oil

ACQUIRED 1964



BURCHFIELD, CHARLES E.
SUN, MOON AND STARS

CARPENTER, FRANCIS BICKNELL

American, 1830-1900

 PORTRAIT OF A GENTLEMAN | 1860

Oil | Oval, 29¼ x 24¼"

 GIFT OF GEORGE ARENTS

 PORTRAIT OF A LADY | 1862-63

Oil | Oval, 29¼ x 24¼"

 GIFT OF GEORGE ARENTS

CASANOVA Y ESTORACH, ANTONIO

Spanish, 1847-1896

 CARDINAL WITH PLANT

Oil | 20¼ x 15¼"

 GIFT OF GEORGE ARENTS

CAZIN, JEAN CHARLES

French, 1841-1901

 HAZEBROUCH CANAL

Oil | 23 x 28¼"

 GIFT OF GEORGE ARENTS

CEDERSTRÖM, THURE NIKOLAUS, BARON VON

Swedish, born 1843

 MONK AND BISHOP READING LETTER

Oil | 16¼ x 21¼"

 GIFT OF GEORGE ARENTS

CHANDLER, IZORA C.

 GEORGE FISK COMFORT | 1884

Oil | 30 x 25"

 ACQUIRED 1884

CHAPIN, FRANCIS

American, born 1899

 CITY STREET | MEXICO

Watercolor | 15¼ x 21¼"

 ACQUIRED 1948

*THIRD GRADE SCHOLAR

Oil on panel | 24¼ x 23½"

 ACQUIRED 1948

 FALL LANDSCAPE | 1945

Watercolor | 14½ x 39½"

 ACQUIRED 1950

CHARLAMOFF, ALEXEI ALEXEIVITCH

Russian, born 1842

 GIRL WITH GREEN DRAPERY

Oil | 22 x 17"

 GIFT OF GEORGE ARENTS

CHARLOT, JEAN

American, born Paris, 1898

 MEXICAN FIESTA | 1960

Fresco | 9' x 45' Shaw Dormitory

 MURAL PROGRAM | 1960

CHARMAN, JESSIE BONE

American, born 1895

 OLD MILL WHEEL | 1942

Watercolor | 20½ x 25½"

 ACQUIRED 1942

CHARMAN, MONTAGUE

American, born London, 1894

 ABSTRACTION | 1946

Oil on masonite | 77 x 36"

 ACQUIRED 1946

 CENTURIES HAVE PASSED | 1948

Watercolor | 21½ x 29"

 ACQUIRED 1948

 LOGGING CAMP—STATE OF WASHINGTON | 1948

Watercolor | 21½ x 28½"

 ACQUIRED 1948

CHAVEZ, EDWARD ARCENIO

American, born 1917

 TAOS No. 3 | 1961

Oil | 30 x 40"

 GIFT OF DEAN AND MRS. KENNETH SARGENT | 1961

CHERNEY, MARVIN

 ANNIE ABRAMS | 1964

Oil | 42 x 35"

 GIFT OF JOSEPH KAHN | 1964



CHAPIN, FRANCIS

THIRD GRADE SCHOLAR

CHRIST-JANER, ALBERT WILLIAM

American, born 1910
B-3 | 1963
Watercolor | 27½ x 36½"
GIFT OF THE ARTIST | 1963

CLARK, HORACE

American, born 1911
TENNIS PLAYERS | 1956
Oil | 47½ x 36¾"
GIFT OF PROF. LAURANCE J. LONGLEY | 1963

COIGNARD, JAMES

French, born 1931
PINK WITH BLACK COMPOSITION
Oil on panel | 19¾ x 25½"
GIFT OF MR. AND MRS. MAURICE HAHN | 1962

STILL LIFE WITH FRUIT
Oil on panel | 19¾ x 24"
GIFT OF MR. AND MRS. MAURICE HAHN | 1962

CONDON, CATHERINE I.

American, born 1892 (S.U. 1915)
PEONIES | 1942
Watercolor | 25½ x 20½"

CONNERS, A. J.

PAUL SHIPMAN ANDREWS
Oil | 44 x 36"

CONWAY, FRED E.

American, born 1900
MURAL DESIGN | 1962
Encaustic on cement | 12' x 20'
Stairwell, Lowe Art Center
MURAL PROGRAM | 1962

COOK, HOWARD

American, born 1901
13 SKETCHES FOR SAN ANTONIO MURALS | 1937
Watercolor | each 13 x 40"
GIFT OF THE ARTIST | 1964

4 SKETCHES FOR CORPUS CHRISTI MURALS | 1941
Gouache | 11 x 24½"
GIFT OF THE ARTIST | 1964

MAN'S HUMANITY TO HIS FELLOW MAN
AND HIS SERVICE TO OTHERS
Sketch for the Mayo Clinic Mural | 1954
Gouache on board | 18 x 57"
GIFT OF THE ARTIST | 1964

MAN'S ASPIRATIONS | 1960
Study for Detroit Public Library Mural
Gouache on board | 23¾ x 63"
GIFT OF THE ARTIST | 1964

COOPER, THOMAS SIDNEY

English, 1803-1902
COWS, SHEEP AND GOATS
Oil | 15¼ x 20¼"
GIFT OF GEORGE ARENTS

LANDSCAPE WITH COWS
Oil | 15¾ x 20¼"
GIFT OF GEORGE ARENTS

CRANACH, LUCAS

German, 1472-1553
JUDITH WITH THE HEAD OF HOLOFERNES
Oil on panel | 32½ x 21¼"
GIVEN ANONYMOUSLY | 1886

CURRY, JOHN STEUART

American, 1897-1946
*THE GOSPEL TRAIN | 1929
Oil | 40 x 52"
GIFT OF HENRY CROWN | 1957

HOGS KILLING A RATTLESNAKE | 1925
Watercolor | 20¼ x 27¼"
ACQUIRED 1964



CURRY, JOHN STEUART
THE GOSPEL TRAIN

DALI, SALVADOR

Spanish, born 1904
COL. JACK L. WARNER | 1951
Oil | 42 x 50"
GIFT OF COL. JACK WARNER | 1961

DARNAUD, MAXIME

French, born 1931
NATURE MORTE—ROUGE | 1959
Oil | 29 x 36½"
GIFT OF MR. AND MRS. MAURICE HAHN | 1962

WOMAN IN KITCHEN | 1959
Oil | 32 x 40"
GIFT OF MR. AND MRS. MAURICE HAHN | 1962

DAVEY, RANDALL

American, born 1887
THE START
Oil on masonite | 11 x 20"
ACQUIRED 1951

DETAILLE, ÉDOUARD

French, 1848-1912
PRISE D'UN DRAPEAU AUTRICHIEN | 1901
Oil on panel | 18½ x 15½"
GIFT OF GEORGE ARENTS

DETTI, CÉSARE-AUGUSTE

Italian, 1847-1914
LA JEUNESSE DE LOUIS XIV | 1896
Oil | 26½ x 36½"
GIFT OF GEORGE ARENTS

DIETERLE, MARIE, NÉE VAN MARCKE

French, 1856-1935
LANDSCAPE WITH CATTLE
Oil | 8¾ x 13"
GIFT OF GEORGE ARENTS

DOBBS, JOHN

MIRROR, MIRROR ON THE WALL | 1959
Drawing | 19 x 25"
GIFT OF JOSEPH KAHN | 1964

DORCLEY, ROLAND

born Haiti, 1929
FIGURE COMPOSITION | 1959
Oil | 18 x 26"
GIFT OF ARNOLD GRANT | 1962

DOSSI, DOSSO (GIOVANNI DE LUTERO)

Italian, ca. 1474-1542
HOLY FAMILY
Oil on copper | 9⅞ x 11⅞"
GIFT OF MRS. ANDREW TELFER | 1961

DOZIER, OTIS

American, born 1904
WHITE HILLS | 1950
Oil on panel | 20 x 30"
GIFT OF CHANCELLOR WILLIAM P. TOLLEY | 1960

DREYER, W.

American, contemporary
SUB-CITY
Oil on panel | 24 x 28"
GIFT OF WARD EGGLESTON | 1962

DU BOIS, CHARLES EDWARD

American, active ca. 1870
SEATED CARDINAL SMOKING PIPE
Oil | 24¼ x 20½"
GIFT OF GEORGE ARENTS

DUFY, JEAN

French, born 1888
CIRCUS SCENE | 1937
Gouache | 18¼ x 24¼"
GIFT OF IRWIN GUTTAG | 1959

DUNCAN, PAUL

Irish, born 1920
COOLNESS CONTRASTED WITH DRYNESS | 1959
Oil | 32 x 40"
GIFT OF MR. AND MRS. MAURICE HAHN | 1962

DUPONT, AIMÉ

MRS. RUSSELL SAGE | 1907
Pastel | 54½ x 39½"
ACQUIRED 1907

DUPRÉ, JULIEN

French, 1851-1910
HARVESTING
Oil | 26 x 32"
GIFT OF GEORGE ARENTS

DURCHANEK, LUDVIK

American, born Vienna, 1902
SUPERMARKET | 1947
Oil on masonite | 30 x 40"
GIFT OF JOHN DAVIS HATCH | 1960

DWYER, MARTHA McGAVOCK

American, born 1919
JEREMIAD | 1958
Oil | 48 x 36"
GIFT OF ZOLTAN SEPESHY | 1959

EDELfelt, ALBERT-GUSTAF-ARISTIDES

Finnish, 1854-1905
THREE GIRLS ROWING | 1884
Oil | 22¾ x 33"
GIFT OF GEORGE ARENTS

ELLIOTT, CHARLES LORING

American, 1812-1868
*PORTRAIT OF A YOUNG MAN
Oil on panel | 10 x 8"
ACQUIRED 1888

ELLIS, DEAN

American, born 1922
PORT OF CALL | 1958
Oil on masonite | 31 x 45"
GIVEN ANONYMOUSLY | 1960

FORTIFICATIONS AT ELBA | 1960
Oil on masonite | 23 x 47"
GIVEN ANONYMOUSLY | 1960

ERNST, RUDOLPH

Austrian, born 1854
OCCUPATION OF THE SERAGLIO
Oil | 34 x 28"
GIFT OF GEORGE ARENTS

EVERGOOD, PHILIP

American, born 1901
*NIGHTMARE (LADDER TO THE STARS) | 1957
Oil | 25 x 35"
GIFT OF SAUL ROSEN | 1963

SPACE MAN, SPACE MAN, SHINING BRIGHT | 1961
Oil | 39½ x 25"
ACQUIRED 1964

FABRÈS Y COSTA, ANTONIO

Spanish, born 1854
ORIENTAL GIRL PLAYING LUTE
Oil on panel | 17½ x 14½"
GIFT OF GEORGE ARENTS

FLAMENG, FRANÇOIS

French, 1856-1923
THE FLAG BEARER
Oil on panel | 20½ x 13"
GIFT OF GEORGE ARENTS

FLIEGEL, LESLIE

American, born 1912
OF BIRDS, OF CITY TEMPLES
Oil on masonite | 24 x 48"
GIFT OF WARD EGGLESTON | 1962

FORSBERG, JAMES

American, born 1919
NOCTURNE | 1960
Oil | 50 x 36"
ACQUIRED 1962

FRIED, OTTO

American, born Germany, 1936
NEW ENGLAND COAST | 1963
Oil | 36 x 60"
GIFT OF PIERRE DAVID-WEILL | 1963



ELLIOTT, CHARLES LORING
PORTRAIT OF A YOUNG MAN



EVERGOOD, PHILIP
NIGHTMARE (LADDER TO THE STARS)

GAETANO, CHIERICI
CHARITY | 1873
Oil | 28½ x 42½"
GIFT OF GEORGE MAXWELL

GARFIELD, MARJORIE
American, born 1903
SAILBOATS AT ANCHOR
Watercolor | 19 x 24½"
ACQUIRED 1945

GAY, WALTER
American, born 1856
THE CASTLE DOORKEEPER
Oil | 26 x 20"
GIFT OF GEORGE ARENTS

GÉROME, JEAN-LÉON
French, 1824-1904
GIRL IN ORIENTAL COSTUME
Oil | 31¼ x 25¼"
GIFT OF GEORGE ARENTS

MAN AND DONKEY
Oil | 26¼ x 23¼"
GIFT OF GEORGE ARENTS

GOHL, EDWARD HEINRICH
American, born 1862
HON. PETER BURNS | 1903
Oil | 30 x 25"
GIFT OF LYMAN SMITH | 1903

CHANCELLOR JAMES R. DAY | 1903
Oil | 35 x 28"
GIFT OF LYMAN SMITH | 1903

GOODNOUGH, ROBERT
American, born 1917 (S.U. 1940)
DR. T. W. B. CRAFER | 1940
Oil | 40 x 28"
GIFT OF DR. CRAFER ESTATE | 1963

NEGRO GIRL IN BLUE DRESS | 1940
Oil | 36 x 28"
ACQUIRED 1940

COMPOSITION | 1963
Watercolor | 5 x 6½"
ACQUIRED 1964

GOODNOW, FRANK
American, born 1923
BOATS | 1949
Watercolor | 15 x 21"
ACQUIRED 1953

THE BAY | 1963
Oil | 14 x 16"
ACQUIRED 1963

OCHRE FIELD | 1963
Oil | 16 x 16"
ACQUIRED 1963

GOTTLIEB, ADOLPH
American, born 1903
FOUR CLOUDS | 1955
Oil | 14 x 18"
GIFT OF IRWIN GUTTAG | 1962

GRISON, FRANÇOIS ADOLPHE
French, 1845-1914
FRENCH HOSTELRY
Oil | 17¾ x 15"
GIFT OF GEORGE ARENTS

GROSZ, GEORGE
American, born Germany, 1893-1959
UNTITLED (Running Man) | ca. 1922
Ink Drawing | 11 x 8¾"
ACQUIRED 1955

WOMAN SITTING ON A BED | 1923
Ink Drawing | 19¼ x 22½"
ACQUIRED 1955

KAISER DEPARTING GERMANY | 1923
Watercolor | 35 x 25½"
GIFT OF VICE PRESIDENT AND MRS. FRANCIS WINGATE | 1963

*THE TOWN BEYOND THE RIVER | 1949
Oil on panel | 28 x 20"
ACQUIRED 1956

GROSZ, GEORGE
THE TOWN BEYOND THE RIVER



GAETANO, CHIERICI
CHARITY | 1873
Oil | 28½ x 42½"
GIFT OF GEORGE MAXWELL

GARFIELD, MARJORIE
American, born 1903
SAILBOATS AT ANCHOR
Watercolor | 19 x 24½"
ACQUIRED 1945

GAY, WALTER
American, born 1856
THE CASTLE DOORKEEPER
Oil | 26 x 20"
GIFT OF GEORGE ARENTS

GÉROME, JEAN-LÉON
French, 1824-1904
GIRL IN ORIENTAL COSTUME
Oil | 31¼ x 25¼"
GIFT OF GEORGE ARENTS

MAN AND DONKEY
Oil | 26¼ x 23¾"
GIFT OF GEORGE ARENTS

GOHL, EDWARD HEINRICH
American, born 1862
HON. PETER BURNS | 1903
Oil | 30 x 25"
GIFT OF LYMAN SMITH | 1903

CHANCELLOR JAMES R. DAY | 1903
Oil | 35 x 28"
GIFT OF LYMAN SMITH | 1903

GOODNOUGH, ROBERT
American, born 1917 (S.U. 1940)
DR. T. W. B. CRAFER | 1940
Oil | 40 x 28"
GIFT OF DR. CRAFER ESTATE | 1963

NEGRO GIRL IN BLUE DRESS | 1940
Oil | 36 x 28"
ACQUIRED 1940

COMPOSITION | 1963
Watercolor | 5 x 6½"
ACQUIRED 1964

GOODNOW, FRANK
American, born 1923
BOATS | 1949
Watercolor | 15 x 21"
ACQUIRED 1953

THE BAY | 1963
Oil | 14 x 16"
ACQUIRED 1963

OCHRE FIELD | 1963
Oil | 16 x 16"
ACQUIRED 1963

GOTTLIEB, ADOLPH
American, born 1903
FOUR CLOUDS | 1955
Oil | 14 x 18"
GIFT OF IRWIN GUTTAG | 1962

GRISON, FRANÇOIS ADOLPHE
French, 1845-1914
FRENCH HOSTELRY
Oil | 17¾ x 15"
GIFT OF GEORGE ARENTS

GROSZ, GEORGE
American, born Germany, 1893-1959
UNTITLED (Running Man) | ca. 1922
Ink Drawing | 11 x 8¾"
ACQUIRED 1955

WOMAN SITTING ON A BED | 1923
Ink Drawing | 19¼ x 22½"
ACQUIRED 1955

KAISER DEPARTING GERMANY | 1923
Watercolor | 35 x 25½"
GIFT OF VICE PRESIDENT AND MRS. FRANCIS WINGATE | 1963

*THE TOWN BEYOND THE RIVER | 1949
Oil on panel | 28 x 20"
ACQUIRED 1956

GROSZ, GEORGE
THE TOWN BEYOND THE RIVER



GUTSELL, H. S.

American
GEORGE FISK COMFORT | 1885
Oil | 25 x 30"

HAFT, MORRIS W.

INTERIOR | 1953
Oil on masonite | 22 x 28"
GIFT OF THE ARTIST | 1955

LANDSCAPE | 1953
Oil on masonite | 16 x 20"
GIFT OF THE ARTIST | 1955

HARRER, ROBERT

HAREM GIRL | 1926
Oil | 29½ x 23½"
ACQUIRED 1927

LITTLE BOPEEP | 1927
Oil | 60 x 72"
ACQUIRED 1927

HART, WILLIAM

American, born Scotland, 1823
SUMMER LANDSCAPE | 1877
Oil | 24½ x 20½"

HEKKING, WILLIAM

American, born 1885 (S.U. 1908)
OFF CAPE FAREWELL, GREENLAND | 1953
Watercolor | 17½ x 27"
GIFT OF THE ARTIST | 1958

HAUCKE, FREDERICK

American, born South Africa, 1908
COLLEGE OF LAW, 1904
Ink drawing | 14 x 18"
ACQUIRED 1956

SYRACUSE UNIVERSITY BLOCK
Ink drawing | 14 x 18"
ACQUIRED 1956

HELIKER, JOHN EDWARD

American, born 1909
DIRT ROAD | 1940
Dry brush, pen and ink drawing | 12¾ x 17"
ACQUIRED 1950

SUBWAY | 1940
Pen and ink drawing | 8¾ x 6½"
ACQUIRED 1950

SEATED MAN, READING | 1943
Dry brush, pen and ink drawing | 15½ x 11¾"
ACQUIRED 1950

STILL LIFE | 1943
Pen and ink drawing | 17½ x 11¾"
ACQUIRED 1950

WOMAN | 1943
Brush, ink drawing | 18 x 11¾"
ACQUIRED 1950

HENNER, JEAN-JACQUES

French, 1829-1905
GIRL IN BLACK GOWN
Oil | 13 x 16"
GIFT OF GEORGE ARENTS

GIRL IN RED HOOD
Oil | 18¾ x 14¾"
GIFT OF GEORGE ARENTS

HERMANN, H. G.

German, born 1831
LEOPOLD VON RANKE | 1883
Oil | 51¾ x 39¾"
GIVEN ANONYMOUSLY | 1886

HERMES, ALLAN

American, born 1912 (S.U. 1934)
NEGRO HOLDING RIFLE
Oil | 36 x 28"

DR. PERLEY O. PLACE | 1937
Charcoal drawing | 24 x 18"

STILL LIFE
Watercolor | 21 x 16"

HEYTHUM, ANTONIN

American, born Hungary, 1901-1954
GREAT GOD BROWN (Stage design) | 1928
Wash drawing | 11¼ x 7¾"
ACQUIRED 1947

THE FATAL PLAY OF LOVE (Stage design) | 1930
Wash drawing | 11½ x 9¼"
ACQUIRED 1947

HILL, ROSWELL STONE

American, 1861-1907
AFTERNOON TEA
Oil | 32 x 26"
GIFT OF MRS. R. S. HILL | 1903

SCENE ON THE CAMPUS | 1903
Oil | 37 x 48"
GIFT OF MRS. R. S. HILL | 1903

HORLE, EDITH LOUISA

American, 1897-1962 (S.U. 1919)
POND IN WINTER
Watercolor | 14¼ x 19"

HOUGH, EDITH A.

American (S.U. Class 1920)
WINTER SCENE
Watercolor | 19½ x 16"

HUTCHENS, FRANK TOWNSEND

American, 1869-1934
MARY JANE O'BRYON SIBLEY | 1910
Oil | 40 x 31"
ACQUIRED 1910

ISABEY, LOUIS-GABRIEL EUGÈNE

French, 1803-1886
THE PRISONER | 1862
Oil on panel | 21¾ x 18¼"
GIFT OF GEORGE ARENTS

JACOBSON, EGBERT

American, born 1890
M. LYLE SPENCER | 1958
Oil | 37¾ x 29½"
GIFT OF SCHOOL OF JOURNALISM
ALUMNI ASSOCIATION | 1959

JACQUET, GUSTAVE JEAN

French, 1846-1909
PORTRAIT OF A GIRL
Oil | 12 x 10"
GIFT OF GEORGE ARENTS

JAMES, MERLE D.

American, 1890-1963
ROCKS AND ICE, MAINE | 1954
Oil on board | 12 x 18"
GIFT OF THE ARTIST'S DAUGHTER,
MRS. DUDLEY ROCKWELL | S.U. CLASS OF 1939

JONGKIND, JOHAN

Dutch, 1819-1891
DUTCH HARBOR SCENE | 1868
Oil | 9¾ x 13"
GIFT OF GEORGE ARENTS

KAHN, SUSAN

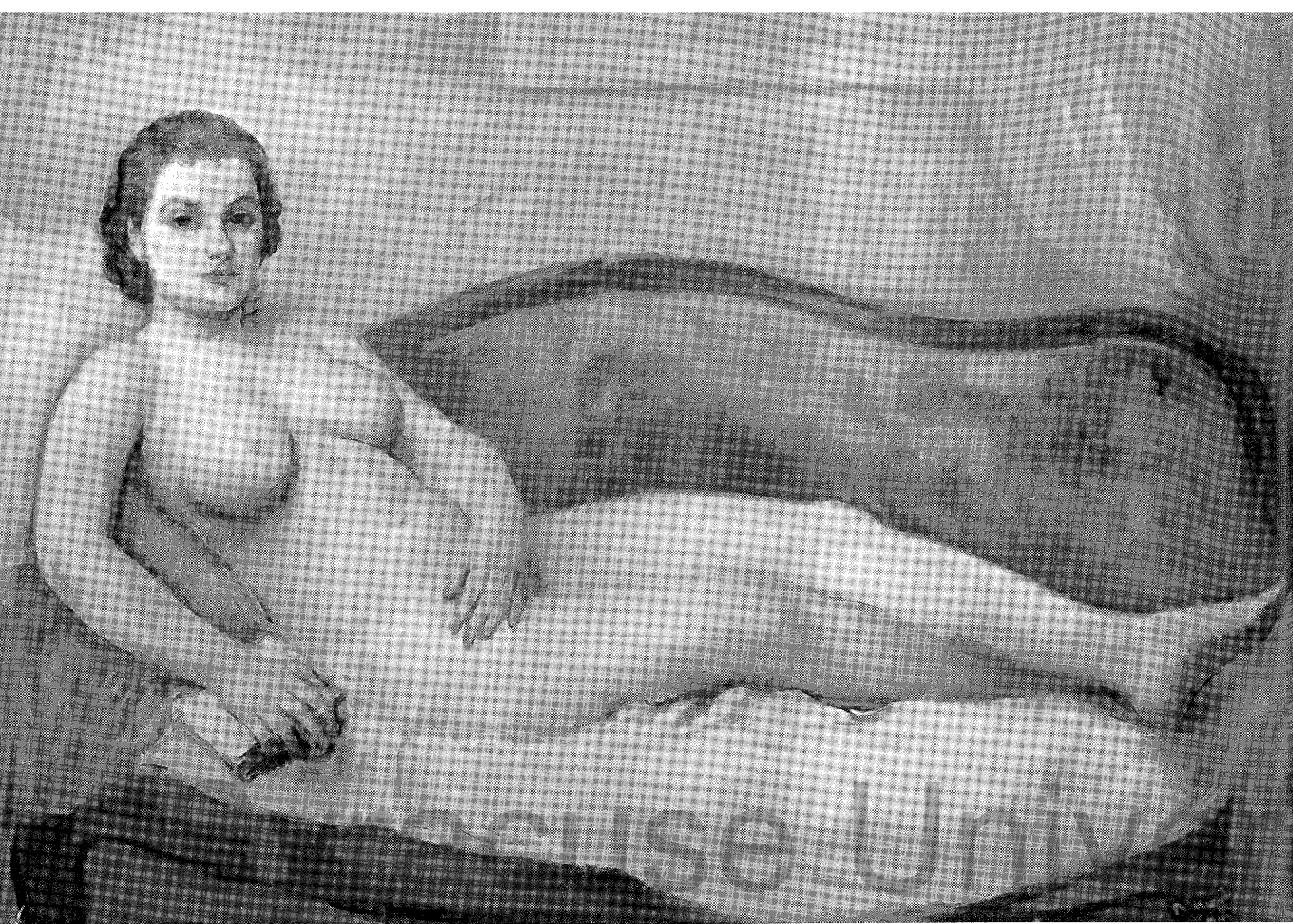
THE LIBRARY | 1962
Oil | 36 x 30¼"
GIFT OF JOSEPH KAHN | 1964

KARFIOL, BERNARD

American, born Hungary, 1886-1951
*BABETTE | 1934
Oil | 36 x 54"
ACQUIRED 1964

KEISEL, CONRAD

YOUNG WOMAN WITH ROSES
Oil | 41 x 29"
GIFT OF GEORGE ARENTS



KARFIOL, BERNARD
BABETTE

KENSETT, JOHN FREDERICK
American, 1818-1872
LANDSCAPE WITH RIVER
Oil | 14¼ x 9¼"
GIFT OF GEORGE ARENTS

KING, PAUL
FISHING BOATS OF CONCARNEAU
Oil | 30 x 25"
GIFT OF GEORGE MAXWELL

KINIGSTEIN, JONAH
American, born 1923
*THE LAST DREAM OF DON QUIXOTE | 1963
Oil | 59¾ x 42"
GIFT OF MR. AND MRS. IRWIN LEFCOURT | 1964

KLEINSCHMIDT, PAUL
German, 1883-1949
ACTRESS DRESSING | 1937
Oil | 39½ x 29½"
GIFT OF ERICH COHN | 1963

CIRCUS RIDER
Watercolor | 24½ x 18½"
GIFT OF ERICH COHN | 1963

MOTHER AND CHILD (Frau Anna B.)
Pencil Drawing | 19 x 12½"
GIFT OF ERICH COHN | 1963

CIRCUS PERFORMERS | 1933
Oil | 65 x 45¼"
GIFT OF ERICH COHN | 1964

KNIGHT, DANIEL RIDGWAY
American, active 1870-1885
PEASANT GIRL AT THE FOOT OF A CROSS
Oil | 31½ x 25¼"
GIFT OF GEORGE ARENTS

KOPF, MAXIM
American, 1892-1958
BACK STAIRS | 1947
Oil | 33 x 35"
GIFT OF MRS. DOROTHY THOMPSON KOPF | 1960

KOPMAN, BENJAMIN
American, born Russia, 1887
LANDSCAPE | 1960
Oil | 28 x 35"
ACQUIRED 1963

KOZLOWSKI, JOSEPH STANLEY
American, born 1912 (S.U. 1936)
PROF. WILLIAM DAVIDSON
Oil | 26½ x 21½"

DR. WILLIAM SMALLWOOD (1897-1943) | 1940
Oil | 40 x 34"
GIFT OF THE FACULTY OF THE DEPARTMENT OF ZOOLOGY

KUNIYOSHI, YASUO
American, born Japan, 1893-1953
*FORBIDDEN FRUIT | 1950
Oil | 32 x 50"
ACQUIRED 1964

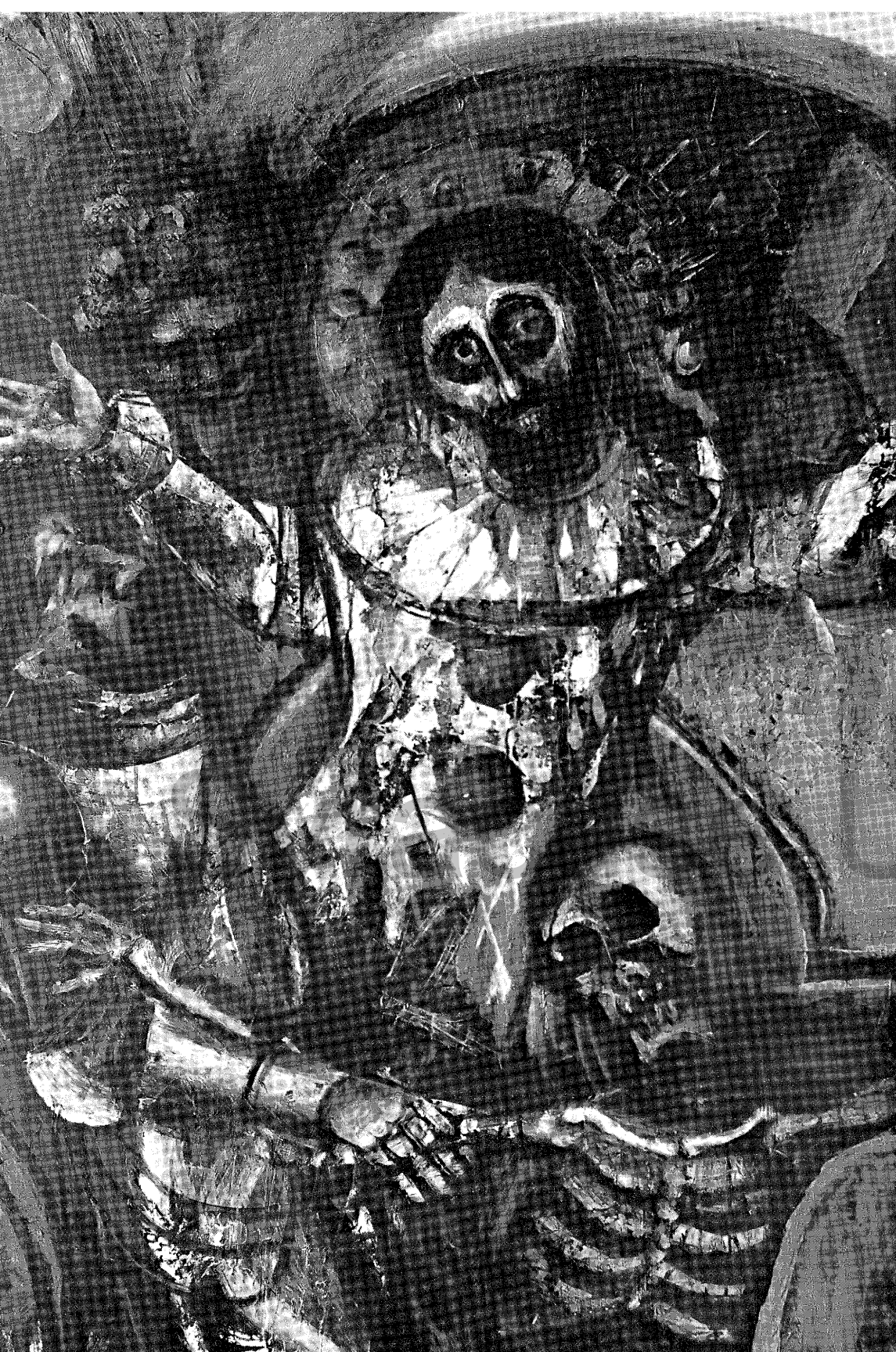
STUDY FOR MR. ACE | 1951
Watercolor and ink | 11½ x 8"
ACQUIRED 1964

GIRL RELAXING
Conte crayon drawing | 13¼ x 16"
ACQUIRED 1964

KUYUNCO
Elizabethville (Congo)
CITY PARK | 1958
Oil on panel | 9 x 8½"
GIFT OF GERRY DIETZ | 1958

LAISSEMENT, HENRI-ADOLPHE
French, died 1921
CARDINAL WITH SEATED BUDDHA
Oil on panel | 10½ x 7½"
GIFT OF GEORGE ARENTS

LASTMAN, PIETERSZ-PIETER
Dutch, 1583-1633
*THE RESURRECTION OF LAZARUS
Oil | 24 x 42"
GIFT OF PROF. ALFRED T. COLLETTE | 1964



KINIGSTEIN, JONAH
THE LAST DREAM OF DON QUIXOTE



KUNIYOSHI, YASUO
FORBIDDEN FRUIT



LASTMAN, PIETERSZ-PIETER
THE RESURRECTION OF LAZARUS

LAURENT, JOHN LOUIS

American, born 1921

SEAWEED GATHERERS (LE MENE-HAM, BRITTANY) | 1949

Casein | 12 x 17"

ACQUIRED 1949

LAURENT, ROBERT

American, born France, 1890

WOMAN SLEEPING

Pencil drawing | 11 1/8 x 12 1/4"

ACQUIRED 1950

LAWSON ERNEST

American, 1873-1939

SPRING

Oil | 25 x 30"

GIFT OF HUNTINGTON HARRIS | 1962

LEBRUN, RICO

American, born Italy, 1900

*CRUCIFIXION | 1950

Oil on upson board | 16' x 26'

GIFT OF WILLIAM C. WHITNEY FOUNDATION | 1958

THE FIELD OF HUMAN STUMPS AND BUSHES | 1961

Wash drawing | 19 x 26"

ACQUIRED 1962

RESTLESS THAÏS | 1961

Wash drawing | 40 x 27 3/4"

ACQUIRED 1962

LECHAY, JAMES

American, born 1907

LIGHTHOUSE | 1950

Oil | 29 x 38"

GIFT OF BENJAMIN WEISS | 1964

LEDOUX, JEANNE PHILIBERTE

French, 1767-1840

HEAD OF A YOUNG GIRL

Oil | 13 x 10"

GIFT OF MRS. ANDREW TELFER | 1961

LEE, RUTH HUDSON

American, born 1885 (S.U. 1915)

OLD HOUSE

Watercolor | 20 1/2 x 25 3/4"

BETH RICE MILLER | 1956

Pastel | 18 x 23 1/2"

ACQUIRED 1956

WHARTON MILLER | 1956

Pastel | 18 x 23 1/2"

ACQUIRED 1956

LEROLLE, HENRY

French, 1848-1929

PEASANT WOMAN WALKING IN FIELD

Oil | 21 1/2 x 25 3/4"

GIFT OF GEORGE ARENTS

LESREL, ADOLPHE ALEXANDER

French, born 1839

CAVALIER CONNOISSEUR | 1891

Oil on panel | 15 1/2 x 10"

GIFT OF GEORGE ARENTS

LEVINSON, ABRAHAM F.

American, 1883-1946

COMPOSITION—NUDES | 1925-1930

Oil | 30 x 38"

GIFT OF MRS. A. F. LEVINSON | 1959

FISHERMAN, GLOUCESTER | 1925-1930

Oil | 30 x 38"

GIFT OF MRS. A. F. LEVINSON | 1959

SELF-PORTRAIT | 1925-1930

Oil | 20 x 16"

GIFT OF MRS. A. F. LEVINSON | 1959

SELF-PORTRAIT | 1925-1930

Oil | 30 x 25"

GIFT OF MRS. A. F. LEVINSON | 1959

STONE QUARRY | 1925-1930

Oil | 16 x 20"

GIFT OF MRS. A. F. LEVINSON | 1959

WOODED LANDSCAPE | 1925-1930
Oil | 24 x 30"
GIFT OF MRS. A. F. LEVINSON | 1959

GROUP OF NUDES
Oil on paper | 8½ x 10¾"
GIFT OF MRS. A. F. LEVINSON | 1959

NUDE ON MODEL STAND
Oil on paper | 7 x 8¾"
GIFT OF MRS. A. F. LEVINSON | 1959

RECLINING NUDE
Oil on paper | 10 x 14"
GIFT OF MRS. A. F. LEVINSON | 1959

STANDING NUDE
Oil on paper | 15 x 11"
GIFT OF MRS. A. F. LEVINSON | 1959

WOMAN SEATED, INTERIOR
Oil on paper | 5 x 8"
GIFT OF MRS. A. F. LEVINSON | 1959

NUDES
Drawing | 5 x 6½"
GIFT OF MRS. A. F. LEVINSON | 1959

L'HERMITTE, LÉON AUGUSTIN
French, 1844-1925
TWO WOMEN WASHING CLOTHES AT RIVER
Oil | 22½ x 17"
GIFT OF GEORGE ARENTS

LITVINOFSKY, PINCUS
Contemporary Israeli
BEN ZVI
Oil on paper | 37½ x 26"
GIFT OF MORRIS HAFT | 1960

CHAIM WEITZMANN
Drawing | 28 x 22"
GIFT OF MORRIS HAFT | 1960

LOOP, JENNIE SHEPPERD
American, 1840-1909
GEORGE FISK COMFORT | 1902
Oil | 30 x 25"

LOWE, EMILY
American, born 1902
CACTUS | 1952
Oil | 18¼ x 24"
GIFT OF THE JOE AND EMILY LOWE FOUNDATION | 1952

McCLOSKEY, W. J.
ESTHER BAKER STEELE | 1875
Oil | 31¾ x 29½"

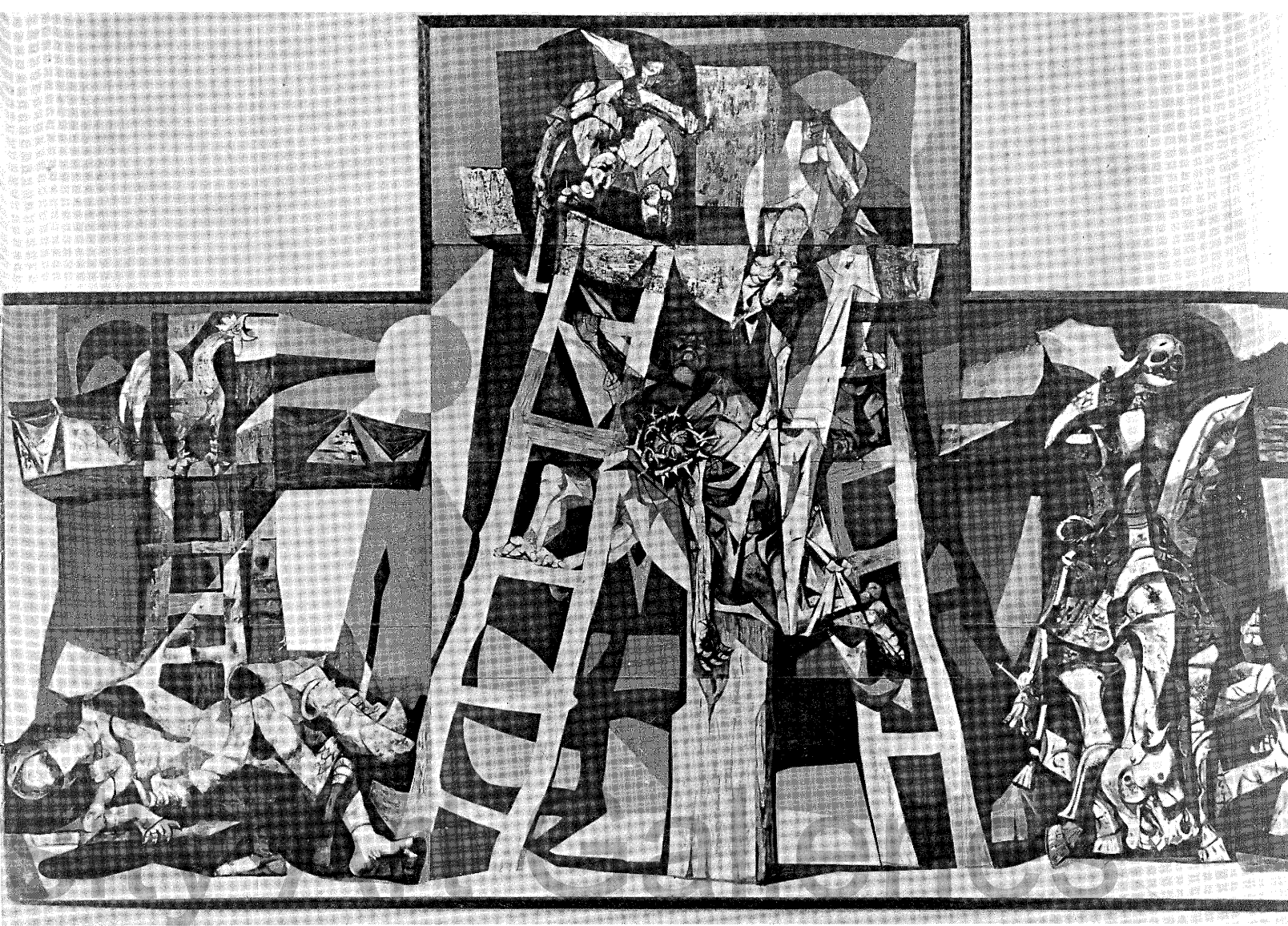
McCULLOUGH, JOSEPH W.
American, born 1922
GREY STILL LIFE | 1951
Gouache | 10¼ x 14¾"
GIFT OF DEAN AND MRS. LAURENCE SCHMECKEBIER | 1964

MADRAZO Y GARRETA, RAIMUNDO DE
Spanish, 1841-1920
GIRL ON GARDEN SWING
Oil | 39½ x 29"
GIFT OF GEORGE ARENTS

MALCON, HAROLD C.
THOMAS KEANE
Oil | 29½ x 23½"

MARINSKY, HARRY
American, born London, 1920
LAVA ROCK NO. 1, MEXICO | 1959
Watercolor | 21 x 28½"
GIFT OF WARD EGGLESTON | 1962

MARIS, JACOB HENRICUS
Dutch, 1837-1899
LANDSCAPE WITH WINDMILL AND TREES
Oil | 17 x 25"
GIFT OF GEORGE ARENTS



LEBRUN, RICO
CRUCIFIXION

MARSH, REGINALD

American, 1899-1954

LANDSCAPE NEAR MANCHESTER, VERMONT | 1934

Watercolor | 15 x 20"

GIFT OF IRWIN GUTTAG | 1959

MARTIN, FLETCHER

American, born 1904

JENNIE | 1949

Ink drawing | 7½ x 9½"

ACQUIRED 1949

MARX, ROBERT E.

American, born Germany, 1925

SILENT VILLAGE | 1959

Oil | 44 x 63"

GIFT OF CHANCELLOR WILLIAM P. TOLLEY | 1959

MONUMENTS OF GOOD AND EVIL | 1960

Fresco | 6' x 45' Flint Hall Lounge

MURAL PROGRAM | 1960

2 SKETCHES FOR MURAL—FLINT HALL | 1960

Charcoal drawing | 17 x 22½"

GIFT OF THE ARTIST | 1960

SEATED FIGURE WITH FLUTE | 1960

Drawing | 17½ x 11"

GIFT OF THE ARTIST | 1960

SEATED FIGURE WITH FLUTE AND MUSIC STAND | 1960

Drawing | 11¾ x 8"

GIFT OF THE ARTIST | 1960

SEATED FIGURE WITH LUTE | 1960

Drawing | 17½ x 13¾"

GIFT OF THE ARTIST | 1960

SEATED FIGURE WITH LUTE | 1960

Drawing | 17½ x 11¾"

GIFT OF THE ARTIST | 1960

11 Drawings for Sawyer Falk's SONS OF ALCESTES

Syracuse University publication | 1961

Charcoal drawings | 22 x 14½" each

GIFT OF THE ARTIST | 1961

MATHIEU, GEORGES

French, born 1921

COMPOSITION

Gouache | 21 x 17"

GIFT OF SIMON ASKIN | 1964

MATOBA, KISHIO

American, born 1921

ADIRONDACK NO. 3 | 1962

Watercolor | 14 x 20"

ACQUIRED 1962

MAUVE, ANTON

Dutch, 1838-1888

LANDSCAPE WITH COW

Oil on panel | 13 x 19¼"

GIFT OF GEORGE ARENTS

MAYLEE, E. X.

JAMES B. BROOKS | 1914

Oil | 30 x 25"

MELLEN, [M.]

GOVERNOR AVERELL HARRIMAN | 1956

Oil | 24¼ x 10½"

GIFT OF GOVERNOR HARRIMAN | 1959

MEŠTROVIĆ, IVAN

American, born Croatia, 1883-1962

MADONNA AND CHILD

Red chalk drawing | 24½ x 16"

ACQUIRED 1955

PLUTO AND PERSEPHONE | 1945

Red chalk drawing | 23¼ x 16"

ACQUIRED 1955

STRIDING HERMIT | 1945

Red chalk drawing | 22 x 19"

ACQUIRED 1955

STUDY—ANGEL PLAYING VIOLIN AND SEATED FIGURE

Red chalk drawing | 26 x 20½"

ACQUIRED 1955

STUDY OF AN APOSTLE | 1945

Red chalk drawing | 22 x 15½"

ACQUIRED 1955

STUDY OF A MAN READING

Red chalk drawing | 26 x 16"

ACQUIRED 1955

STUDY OF A WOMAN PRAYING | 1945

Red chalk drawing | 23 x 14½"

ACQUIRED 1955

TWO WOMEN AND CHILDREN | 1947

Red chalk drawing | 24 x 17½"

ACQUIRED 1955

NUDE | 1947

Charcoal drawing | 20 x 15"

ACQUIRED 1955

ST. CHRISTOPHER

Charcoal drawing | 26 x 20½"

ACQUIRED 1955

STUDY—THE GREAT SPIRIT | 1950

Charcoal drawing | 24 x 18"

ACQUIRED 1955

STUDY OF A PROPHET

Brown conte crayon drawing | 17½ x 25"

ACQUIRED 1955

STUDY FOR ST. JEROME | 1945

Red conte crayon drawing | 45 x 38"

ACQUIRED 1955

MOLKENBOER, THEODORE

Dutch, 1871-1920

REV. WILLIAM HARMON van ALLEN | 1911

Oil | 45 x 34"

MORSE, SAMUEL F. B.

American, 1791-1872

*EXHIBITION GALLERY OF THE LOUVE | 1832-1833

Oil | 76 x 106½"

GIFT OF MRS. ALLEN MUNROE | 1884

MOTHERWELL, ROBERT

American, born 1915

ABSTRACTION IN BLACK AND GREY | 1947

Oil on masonite | 21 x 15½"

GIFT OF THE IRWIN AND MARJORIE GUTTAG FOUNDATION | 1963

MURPHY, F. D.

JOSEPH SLOCUM | 1915

Oil | 43¾ x 29½"

MURRAY, ALBERT K.

American, born 1906

CHANCELLOR WILLIAM PRATT GRAHAM

Oil | 59½ x 40½"

GIFT OF THE CLASS OF 1938

NAKAMURA, NAONDO

Japanese, born 1905

YOUNG GIRL AND CAT

Tempera | 38½ x 25"

GIFT OF ARNOLD GRANT | 1959

NEAGOË, ANNA

American, born Rumania

PETER NEAGOË

Oil | 32 x 25½"

GIFT OF THE ARTIST | 1962

NEAGOË, PETER

American, born Rumania, 1882-1960

AUTUMN LEAVES

Oil on canvasboard | 18 x 15"

GIFT OF MRS. ANNA NEAGOË | 1962

BOY IN BLUE SHIRT

Oil | 22 x 18"

GIFT OF MRS. ANNA NEAGOË | 1962

FISHING VILLAGE

Oil on canvasboard | 10 x 14"

GIFT OF MRS. ANNA NEAGOË | 1962

FOREST INTERIOR

Oil | 20 x 16"

GIFT OF MRS. ANNA NEAGOË | 1962

LANDSCAPE WITH PURPLE HILLS

Oil on canvasboard | 18 x 15"

GIFT OF MRS. ANNA NEAGOË | 1962

LANDSCAPE WITH STONE BUILDINGS

Oil on canvasboard | 20 x 16"

GIFT OF MRS. ANNA NEAGOË | 1962

Syracus

MORSE, SAMUEL F. B.
EXHIBITION GALLERY OF THE LOUVE



LANDSCAPE WITH VILLAGE
Oil on canvasboard | 18 x 15"
GIFT OF MRS. ANNA NEAGOË | 1962

LANDSCAPE WITH YELLOW BRICK BUILDINGS
Oil | 18 x 22"
GIFT OF MRS. ANNA NEAGOË | 1962

MAN WITH GRAY HAT
Oil | 26 x 18"
GIFT OF MRS. ANNA NEAGOË | 1962

MAN WITH OPEN BOOK
Oil | 22 x 18"
GIFT OF MRS. ANNA NEAGOË | 1962

MAN WITH A PIPE
Oil | 18 x 12"
GIFT OF MRS. ANNA NEAGOË | 1962

ROCKY HILLSIDE
Oil on canvasboard | 10 x 14"
GIFT OF MRS. ANNA NEAGOË | 1962

ROCKY LANDSCAPE
Oil on canvasboard | 20 x 16"
GIFT OF MRS. ANNA NEAGOË | 1962

WINTER LANDSCAPE
Oil | 15 x 20"
GIFT OF MRS. ANNA NEAGOË | 1962

WOMAN IN BLACK HOLDING FAN
Oil | 34 x 24"
GIFT OF MRS. ANNA NEAGOË | 1962

WOMAN IN DARK RED DRESS
Oil | 24 x 20"
GIFT OF MRS. ANNA NEAGOË | 1962

WOMAN IN MUSTARD YELLOW DRESS
Oil | 31 x 25"
GIFT OF MRS. ANNA NEAGOË | 1962

WOMAN WITH RED COAT
Oil | 16 x 14"
GIFT OF MRS. ANNA NEAGOË | 1962

WOMAN IN WHITE DRESS
Oil | 20 x 16"
GIFT OF MRS. ANNA NEAGOË | 1962

WOMAN IN YELLOW DRESS
Oil | 21¾ x 18"
GIFT OF MRS. ANNA NEAGOË | 1962

YOUNG MAN IN BLACK SUIT
Oil | 29 x 25"
GIFT OF MRS. ANNA NEAGOË | 1962

YOUNG WOMAN IN GREEN DRESS | 1926
Oil | 26 x 18"
GIFT OF MRS. ANNA NEAGOË | 1962

YOUNG WOMAN IN WHITE BLOUSE
Oil | 20 x 16"
GIFT OF MRS. ANNA NEAGOË | 1962

NORDHAUSEN, A. HENRY
American, born 1901
DEAN ANNIE LOUISE MACLEOD | 1958
Oil | 39½ x 33½"
GIFT OF ANNIE LOUISE MACLEOD EUTHENICS FUND | 1958
EDA | 1959
Oil | 20 x 16"
ACQUIRED 1962
MORSE DELLPLAIN | 1961
Oil | 43½ x 33¾"
ACQUIRED 1961
DEAN PAUL APPLEBY | 1962
Oil | 30 x 25"
GIFT OF THE MAXWELL SCHOOL OF CITIZENSHIP FACULTY | 1962
HUNTINGTON BEARD CROUSE (1872-1943) | 1962
Oil | 45 x 35"
GIFT OF CHANCELLOR WILLIAM P. TOLLEY | 1963

OCHIKUBO, TETSUO
American, born Hawaii, 1923
CIRCUMLOCUTION | 1957
Oil | 23½ x 41½"
GIFT OF DR. AND MRS. SAM DUNAIF | 1963

SEED OF ALL THINGS | 1963
Watercolor | 17¼ x 11½"
ACQUIRED 1964

OKIMOTO, JERRY TSUKIO
American, born Hawaii, 1921
BLACK CONCEPTION NO. 2
Oil | 60½ x 52½"
GIFT OF EDWARD H. WEISS | 1960

PAINTING 1957
Oil | 72 x 52"
GIFT OF EDWARD H. WEISS | 1960

MOBILE PAINTING NO. 7 | 1963
Acquatec on canvas | 30 x 60"
ACQUIRED 1963

OLINSKY, IVAN G.
American, born Russia, 1878
DEAN WILLIAM E. MOSHER | 1945
Oil | 36 x 30"
GIFT OF MRS. WILLIAM E. MOSHER | 1945

OSVER, ARTHUR
American, born 1912
THE LADDER | 1952
Oil | 27 x 22"
ACQUIRED 1960
EVENING SMOKE | 1953
Oil | 10 x 8"
ACQUIRED 1953

OTTESEN, FRED
American
THE FOREST | 1963
Gouache | 10½ x 8½"
GIFT OF JACOB SCHULMAN | 1964

PALMER, WALTER L.
American, born Albany, active 1880's
THE MELTING BROOK
Pastel | 23½ x 19½"
GIFT OF GEORGE MAXWELL

PAPART, MAX
French, born Marseilles, 1911
VIOLETS
Oil | 21¾ x 18¾"
GIFT OF MR. AND MRS. MAURICE HAHN | 1962

PARTON, HENRY W.
THE ARTIST | 1920
Oil | 28 x 36"
GIFT OF GEORGE MAXWELL

PASCIN, JULES
American, born Bulgaria, 1885-1930
FIGURE SKETCHES
Ink and pencil | 19 x 14½"
ACQUIRED 1950

PEARLSTEIN, PHILIP
American, born 1924
TWO MODELS
Oil | 40 x 56"
GIFT OF BENJAMIN WEISS | 1964

PEREIRA, IRENE RICE
American, born 1907
*NIGHT SEA | 1951
Glass construction | 37 x 29"
ACQUIRED 1960
THE VEIL OF TRUTH | 1952
Oil | 40 x 50"
ACQUIRED 1960
CIRCUIT OF SPACE | 1957
Oil | 40 x 50"
GIFT OF MISS MARJORIE FALK | 1960
SPRING OF SOURCE | 1957
Oil | 32 x 42"
GIFT OF BENJAMIN WEISS | 1964

PETERSEN, JOHN ERIK CHRISTIAN
Danish, 1839-1874
REV. BENONI I. IVES
Oil | 34 x 25"
ACQUIRED 1896



PEREIRA, IRENE RICE
NIGHT SEA

PHILLIPS, THOMAS

English, 1770-1845

PORTRAIT OF A GENTLEMAN (EARL OF DOVER)

Oil | 29½ x 25"

GIFT OF WILLIAM DE KRAFFT | 1958

PICKEN, GEORGE

American, born 1898

MARINE NO. 1 | 1951

Oil | 36 x 28"

GIFT OF THE JOE AND EMILY LOWE FOUNDATION | 1952

PIKE, JOHN

American, born 1911

FLOWER STILL LIFE | 1957

Oil on panel | 48 x 30"

GIFT OF ARNOLD GRANT | 1962

PINE, THEODORE

American, 1827-1905

ERASTUS OTIS HAVEN | 1880

Oil | 30 x 25"

MRS. JOHN M. REID | 1887

Oil | 30 x 25"

ACQUIRED 1896

REV. JOHN M. REID | 1887

Oil | 30 x 25"

ACQUIRED 1896

POHR, J.

GOVERNOR AVERELL HARRIMAN

Oil | 34½ x 24"

GIFT OF GOVERNOR HARRIMAN | 1959

POLLOCK, MERLIN

American, born 1905

TWENTY-THIRD PSALM | 1949

Gouache | 22 x 28"

ACQUIRED 1949

ADIRONDACK LAKE | 1950

Gouache | 22 x 28"

ACQUIRED 1953

WILLIAM RUBIN (1871-1928) | 1954

Oil on panel | 32 x 28"

ACQUIRED 1954

ROBERT SHAW | 1956

Oil | 48 x 36"

ACQUIRED 1956

MRS. ROBERT SHAW | 1956

Oil | 48 x 36"

ACQUIRED | 1956

FURY | 1957

Casein | 21 x 29½"

ACQUIRED 1958

SUNLIGHT AND SHADOW | 1957

Casein | 22 x 28¼"

ACQUIRED 1959

PINES AND BLUE WATER | 1963

Watercolor | 20 x 28"

ACQUIRED 1963

RAIN SQUALL, BAR HARBOR | 1963

Watercolor | 20 x 27"

ACQUIRED 1963

*WINDSWEPT | 1963

Watercolor | 20 x 28"

ACQUIRED 1963

PRIMATICCIO, FRANCESCO

Italian, 1504-1570

REBECCA AT THE WELL

Oil on panel | 36½ x 50¼"

GIVEN ANONYMOUSLY | 1886

QUIRT, WALTER

American, born 1902

POISE | 1957

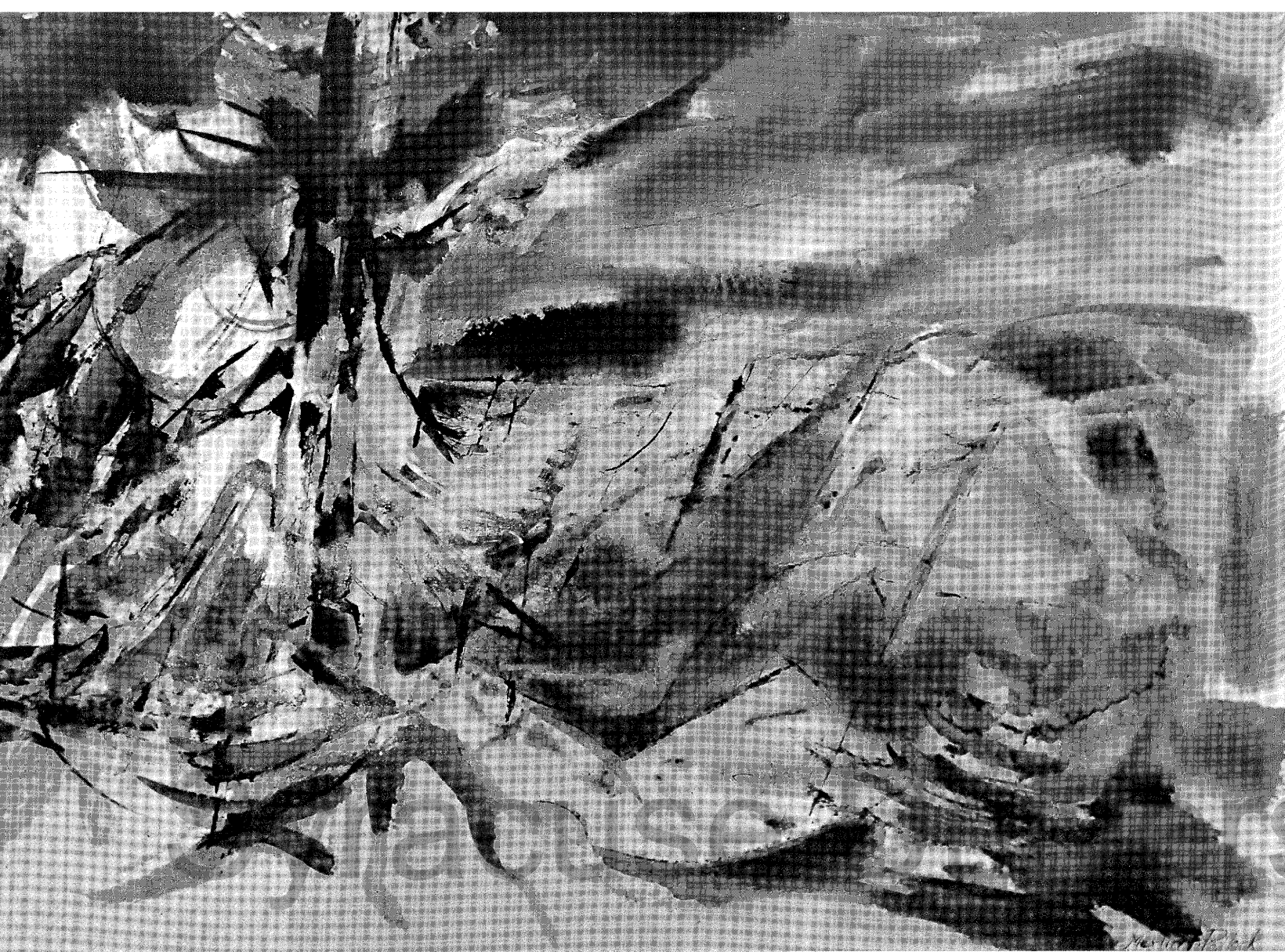
Oil | 41 x 66"

GIFT OF BENJAMIN WEISS | 1964

STUDY FOR "POISE" | 1957

Gouache | 51 x 30½"

GIFT OF BENJAMIN WEISS | 1964



POLLOCK, MERLIN
WINDSWEPT

ANIMAL STUDY | ca. 1957
Gouache | 30½ x 51”
GIFT OF BENJAMIN WEISS | 1964

RAVESTEYN, JAN ANTONISZ VAN
Dutch, 1570-1657
*MAURICE DE NASSAU
Oil | 53 x 38”
GIFT OF MURRAY M. SALZBERG | 1956

READ, ELMER JOSEPH
American, 1862-1935
DEAN JOHN R. FRENCH | 1902
Oil | 54 x 49”
GIFT OF NEW YORK ALUMNI ASSOCIATION | 1904

HENRY ORRIN SIBLEY | 1909
Oil | 22 x 28”

REFREGIER, ANTON
American, born Moscow, 1905
*TRIUMPH OF LOGIC AND REASON
OVER SUPERSTITION AND EVIL | 1963
Casein | 22’ x 50’ Watson Dormitory, Dining Hall
MURAL PROGRAM | 1963

7 CARTOONS FOR WATSON DORMITORY MURAL | 1963
Charcoal drawings
GIFT OF THE ARTIST | 1963

REITER, JOHANN BAPTIST
Austrian, 1813-1890
FIGURES IN A LANDSCAPE
Oil | 25 x 19⅞”
GIFT OF PROF. BRUNO GREENE | 1960

REYNOLDS, KAER
PROF. JOHN JACKSON BROWN | 1888
Charcoal drawing | 24 x 20”

RIBERA, JUSEPE DE
Spanish, 1590-1652
SAINT ANDREW
Oil | 28½ x 23”
GIFT OF MISS ESTHER B. ELY
IN MEMORY OF ALICE WELLS | 1881

RICO ORTEGA, MARTÍN
Spanish, 1883-1904
VIEW OF VENICE
Oil | 20 x 28¼”
GIFT OF GEORGE ARENTS

RIGAUD, HYACINTHE
French, 1659-1743
*PORTRAIT OF LOUIS XIV
Oil | 56 x 43”
GIFT OF MR. AND MRS. HILLIARD N. RENTNER | 1963

ROBINSON, BOARDMAN
American, 1876-1952
THE DUTCH IN THE BALTIC | 1928
Wash drawing | 15 x 17½”
GIFT OF GEORGE VANDER SLUIS | 1959

HEAD (STUDY FOR THE KAUFMANN MURAL, PITTSBURGH)
Wash drawing | 11 x 8⅜”
GIFT OF GEORGE VANDER SLUIS | 1959

STUDY OF A COWBOY HAT
Ink drawing | 9 x 6½”
GIFT OF GEORGE VANDER SLUIS | 1959

STUDY OF A COWBOY HEAD
Ink drawing | 9 x 6⅞”
GIFT OF GEORGE VANDER SLUIS | 1959

THREE SKETCHES OF COWBOY HEADS
Ink drawing | 11 x 15”
GIFT OF GEORGE VANDER SLUIS | 1959

RODIN, AUGUSTE
French, 1840-1917
SLEEPING NUDE
Watercolor | 8½ x 14½”
ACQUIRED 1946



REFREGIER, ANTON

TRIUMPH OF LOGIC AND REASON



RIGAUD, HYACINTHE
PORTRAIT OF LOUIS XIV

ROMAIN, JUANA

JOAN OF ARC
Oil on panel | 39½ x 31½"
GIFT OF GEORGE ARENTS

ROMANO, UMBERTO

American, born Salerno, Italy, 1906
FRAGMENT—WINSTON CHURCHILL | 1962
Oil | 50 x 40"
ACQUIRED 1964

ROTTERS, CARL

American, born 1899
FUR TRAPPERS' RENDEZVOUS | 1962
Oil on walnut panel | 29 x 95"
ACQUIRED 1963

SQUARE TOP FROM THE GREEN RIVER TRAIL,
BRIDGER WILDERNESS AREA, WYOMING | 1962
Pencil drawing | 10 x 12¾"
ACQUIRED 1963

ROYBET, FERDINAND

French, 1840-1920
CAVALIER
Oil on panel | 24 x 12"
GIFT OF GEORGE ARENTS

RUBENS, PETER PAUL

Flemish, 1577-1640
*BRISEIS RESTORED TO ACHILLES
Oil | 17¾ x 27"
GIFT OF MRS. C. MICHAEL PAUL | 1961

RUSSIN, GEORGE

CLOWN
Oil on masonite | 24 x 20"
GIFT OF IRWIN GUTTAG | 1961

SALISBURY, FRANK O.

English, 1874-1962
LENA RICHARDSON ARENTS | 1930
Oil | 50 x 40"
BEQUEST OF GEORGE ARENTS | 1961

GEORGE ARENTS | 1947
Oil | 44 x 34"
GIFT OF GEORGE ARENTS, JR. | 1963

SANH, GEORGES

French, born 1909
FILLE À L'OISEAU
Oil | 29 x 23½"
GIFT OF MR. AND MRS. SAMUEL S. SILVERMAN | 1962

SASPORTAS, CHARLES S.

EMILY LOWE
Oil on canvas | 38 x 32¼"
GIFT OF THE JOE AND EMILY LOWE FOUNDATION | 1952

SATTERLEE, WALTER

American, died 1902
JUNE ROSES
Oil | 40 x 20"
GIFT OF EDWARD M. BYRNE | 1963

SCHIEFER, JOHANNES

STILL LIFE
Gouache | 31 x 22"
GIFT OF ARNOLD GRANT | 1959

SCHMIDT, HARVEY

American, born 1929
FOOTBALL PLAYERS | 1959
Oil | 32 x 42"
GIFT OF ARNOLD GRANT | 1961

SCHRAG, KARL

American, born Germany, 1912
THE COAST IN AUTUMN | 1962
Gouache | 26 x 38"
ACQUIRED 1962

SCHREYER, ADOLF

German, 1828-1899
ARAB ON HORSEBACK
Oil | 16½ x 12¾"
GIFT OF GEORGE ARENTS

LANDSCAPE WITH ARABS AND HORSES
Oil | 22½ x 33"
GIFT OF GEORGE ARENTS

SCHWARTZ, LESTER O.

American, born 1913
CELESTIAL EQUESTRIENNES | 1945
Oil | 20 x 28"

LUXEMBOURG GARDENS
Oil | 21½ x 29"

SCOTT, JEANNETTE

American, born Canada, 1864-1937
CHANCELLOR JAMES R. DAY
Oil | 55 x 45½"

CHANCELLOR JAMES R. DAY | 1901
Oil | 30 x 25"
GIFT OF MR. AND MRS. J. BURCH MCMORRAN | 1962

THE OPEN CASEMENT | 1926
Oil | 40 x 30"
GIFT OF THE ARTIST

SEGAL, EVELYN BUFF

American, born 1915
EVENING IN THE KEYS, FLORIDA | 1962
Oil | 3¾ x 5¼"
GIFT OF CHANCELLOR WILLIAM P. TOLLEY | 1963

SEGÓVIA, ANDRÉ

French, born 1929
FLOWERS IN A VASE | 1955
Oil on masonite | 25½ x 32"
GIFT OF ARNOLD GRANT | 1962

SEPEŠHY, ZOLTAN

American, born Hungary, 1898
*CAR FERRY HARBOR | 1958
Tempera | 24 x 34"
GIVEN ANONYMOUSLY | 1959

SHAHN, BEN

American, born Lithuania, 1898
*1943 A.D.
Tempera | 27½ x 30½"
GIFT OF CHANCELLOR WILLIAM P. TOLLEY | 1960

SHANKLIN, MURIEL MORGAN

American, born 1902 (S.U. 1957)
J. WINIFRED HUGHES | 1957
Oil | 30 x 36"
GIFT OF THE ARTIST | 1957

SLOAN, JOHN

American, 1871-1951
*GLOUCESTER HARBOR | 1916
Oil | 29 x 31"
ACQUIRED 1962

SMITH, BISSELL PHELPS

American, 1892-1962 (S.U. 1918)
GLOUCESTERMEN
Oil | 24 x 30"
GIFT OF THE ARTIST

HILLTOP FARM
Oil | 12 x 30"
GIFT OF THE ARTIST | 1962

SMITH, FRANCIS HOPKINSON

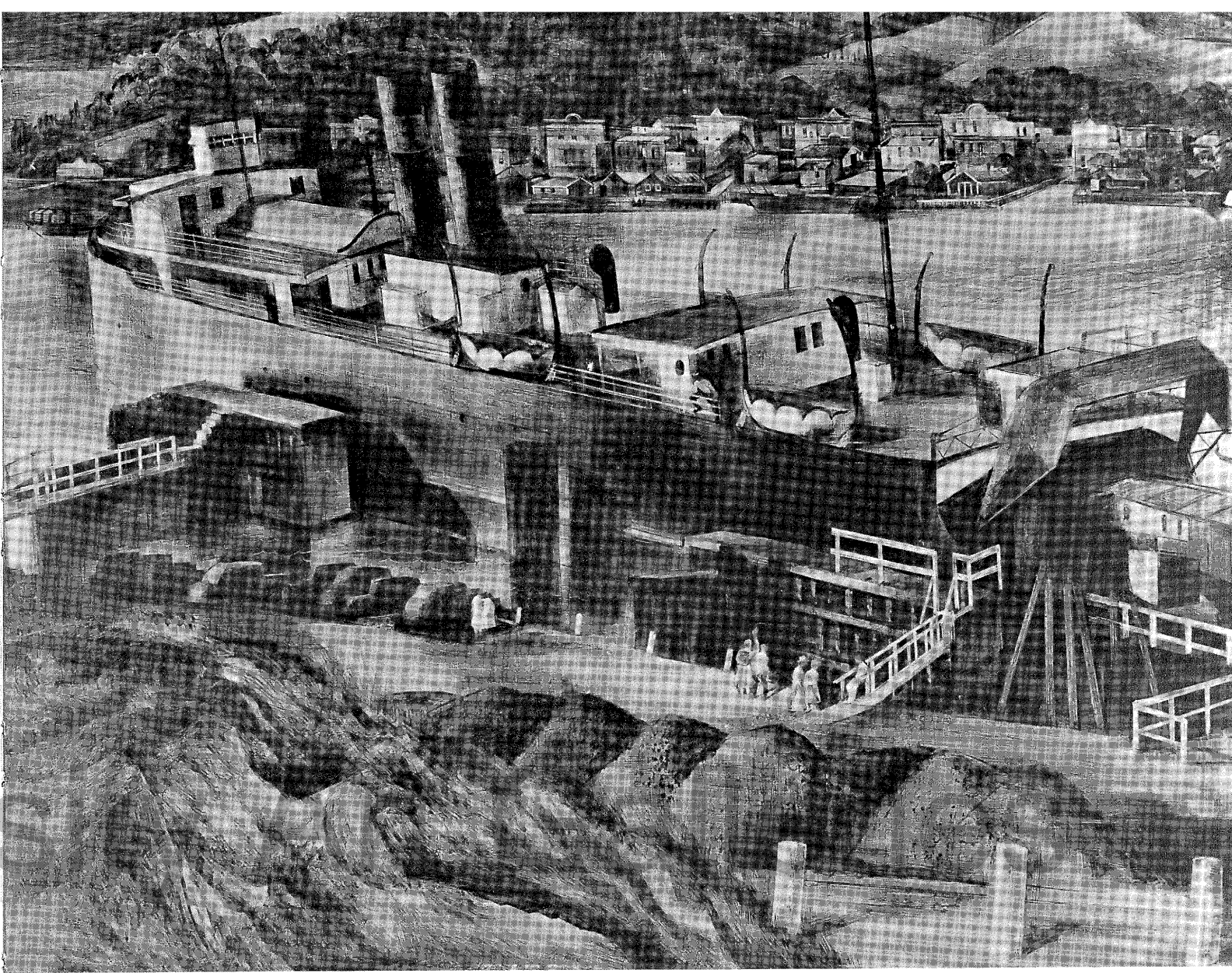
American, born 1838
NORMANDY INN
Watercolor | 24 x 36"
GIFT OF GEORGE MAXWELL

SOURIAN, ZAREH

American
NANTUCKET FENCES
Oil | 24 x 30"
GIFT OF ARNOLD GRANT | 1952

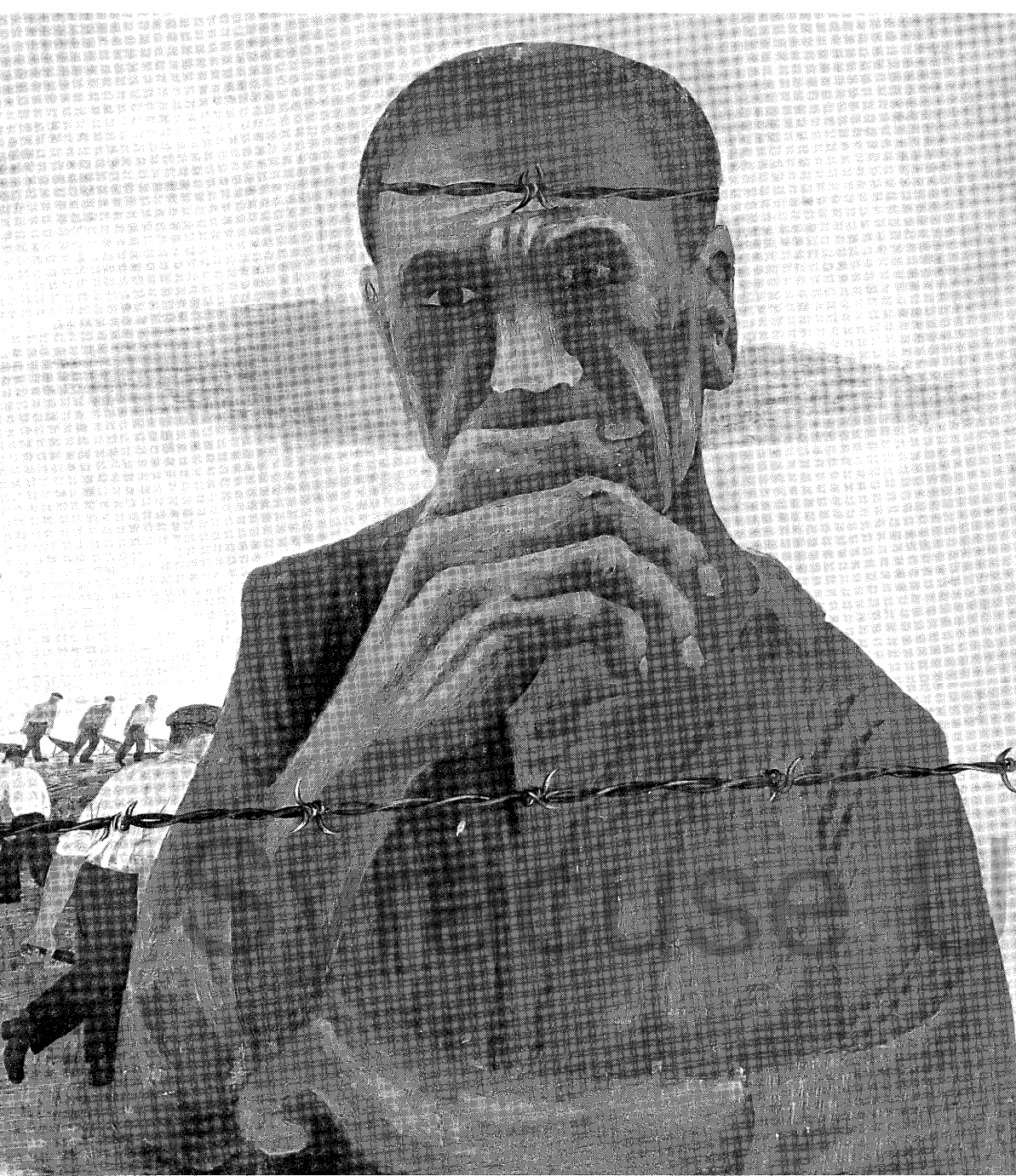
SOYER, MOSES

American, born Russia, 1899
*APPREHENSION II | 1962
Oil | 45 x 50"
ACQUIRED 1964



SEPEŠHY, ZOLTAN

CAR FERRY HARBOR



SHAHN, BEN

1943 A.D.

niver



SLOAN, JOHN

GLOUCESTER HARBOR



SOYER, MOSES
APPREHENSION II

SPEICHER, EUGENE

American, 1883-1962
ERNEST I. WHITE | 1948
Oil | 32½ x 42½"
GIFT OF ERNEST I. WHITE | 1954

STAMOS, THEODOROS

American, born 1922
COMPOSITION IN GRAY AND BROWN | 1948
Oil | 24½ x 40"
GIFT OF BENJAMIN WEISS | 1964

STEELE, GORDON

American, 1906-1961
CARNIVAL WORKERS | 1959
Oil | 31 x 40"
ACQUIRED 1963

STEEN, JAN

Dutch, 1626-1679
GIRL FRYING CAKES
Oil on panel | 32¼ x 27"
GIFT OF MRS. C. MICHAEL PAUL | 1960

STERNBERG, HARRY

American, born 1904
*FLOWERING SUN
Oil | 32 x 46"
GIFT OF MR. AND MRS. THEODORE NEWHOUSE | 1963

STERNE, MAURICE

American, born Latvia, 1877
BENARES GHATS | 1912
Oil | 30½ x 35"
ACQUIRED 1962

STOLL, ROLF

American, born Germany, 1892
PORTRAIT STUDY | 1948
Oil on masonite | 18 x 13½"
GIFT OF DEAN AND MRS. LAURENCE SCHMECKEBIER | 1964

STONE, DAN

WILLIAM HOBART ROYCE | 1959
Oil | 40 x 30"
GIFT OF DR. ABBIE A. ROYCE | 1960

STUBER, JOHN

American, ca. 1880-1950
SEASCAPE
Oil on masonite | 16 x 20"
GIFT OF ARNOLD GRANT | 1959

SUNOL, ALVAR

French contemporary
WOMAN WITH DOVE | 1960
Oil | 36 x 26"
GIFT OF MR. AND MRS.
SAMUEL S. SILVERMAN | 1962

TAYLOR, HILDA GROSSMAN

American, born 1891 (S.U. 1912)
KATHARINE SIBLEY | 1949
Oil | 31 x 25½"
GIFT OF GAMMA PHI BETA SORORITY,
ALPHA CHAPTER | 1953

TEICHMAN, SABINA

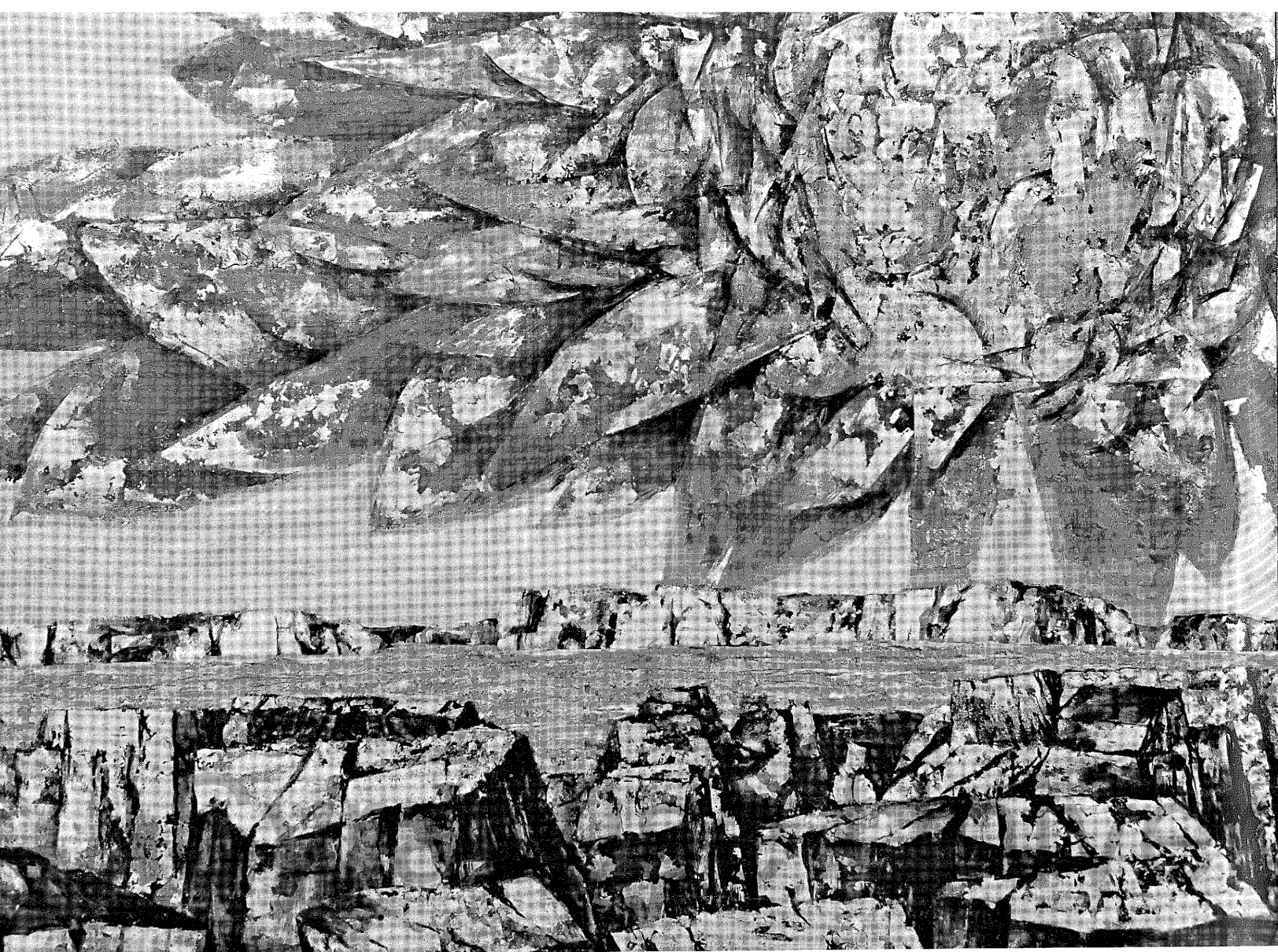
American, born 1905
THE FAMILY JOURNEY
Oil | 28 x 38"
GIFT OF LIVING ARTS FOUNDATION | 1962

THAULOW, FRITZ

Norwegian, 1847-1906
VIEW OF A SMALL CANAL, VENICE
Oil | 25½ x 31¼"
GIFT OF GEORGE ARENTS

THAYER, SANFORD

American, 1820-1880
LUTHER GIFFORD | 1847
Oil | 26½ x 21½"



STERNBERG, HARRY
FLOWERING SUN

THOMAS, STEPHEN SEYMOUR
American, born 1868

GEORGE MAXWELL | 1939

Oil | 45½ x 34½"

GIFT OF GEORGE MAXWELL

MRS. GEORGE MAXWELL | 1939

Oil | 45½ x 34½"

GIFT OF GEORGE MAXWELL

TONEY, ANTHONY
American, born 1913 (S.U. 1934)

THE GALLERY: HOMAGE TO HERMAN BARON | 1962

Oil | 48 x 84"

GIFT OF MR. AND MRS. JOSEPH SPECTOR | 1963

TRIMM, LEE S.
American, born 1879

CHANCELLOR CHARLES WESLEY FLINT | 1936

Oil | 44½ x 55½"

GIFT OF THE CLASS OF 1936

WILLIAM HARRISON POWERS, D.D. | 1945

Oil | 40 x 30"

MAY CRANDON | 1951

Oil | 39½ x 29½"

SENATOR FRANCIS HENDRICKS (1834-1920) | 1952

Oil | 40 x 30"

HON. EDMUND H. LEWIS | 1955

Oil | 39½ x 29½"

GIFT OF ONONDAGA COUNTY BAR ASSOCIATION | 1955

HURLBURT W. SMITH

Oil | 40 x 30"

ACQUIRED 1959

BISHOP W. EARL LEDDEN | 1959

Oil | 40 x 30"

GIFT OF METHODIST FRIENDS OF BISHOP LEDDEN

TRIVIGNO, PATRICK
American, born 1922

NIGHT IN A SPANISH GARDEN | 1959

Oil | 60 x 45"

ACQUIRED 1960

TWITCHELL, ASA WESTON
American, 1820-1904

BISHOP JESSE T. PECK | 1874

Oil | 30 x 25"

ACQUIRED 1896

MRS. JESSE T. PECK | 1874

Oil | 30¼ x 25"

ACQUIRED 1896

UNTERBERGER, FRANZ RICHARD
Belgian, 1838-1902

GRAND CANAL, VENICE

Oil | 24 x 38½"

GIFT OF GEORGE ARENTS

UTRILLO, MAURICE
French, 1883-1954

*MARGEN, VUE d'ENSEMBLE | 1935

Gouache | 20½ x 26½"

GIFT OF ARNOLD GRANT | 1957

VANDER SLUIS, GEORGE
American, born 1915

ABSTRACT DESIGN | 1955

Oil on masonite | 4 x 11'

ACQUIRED 1955

ABSTRACT DESIGN | 1955

Drawing | 14½ x 23"

ACQUIRED 1955

WHITE STRUCTURES | 1957

Polymer tempera | 17¼ x 23½"

ACQUIRED 1957

*EARTH GREEN | 1960

Oil | 40 x 15"

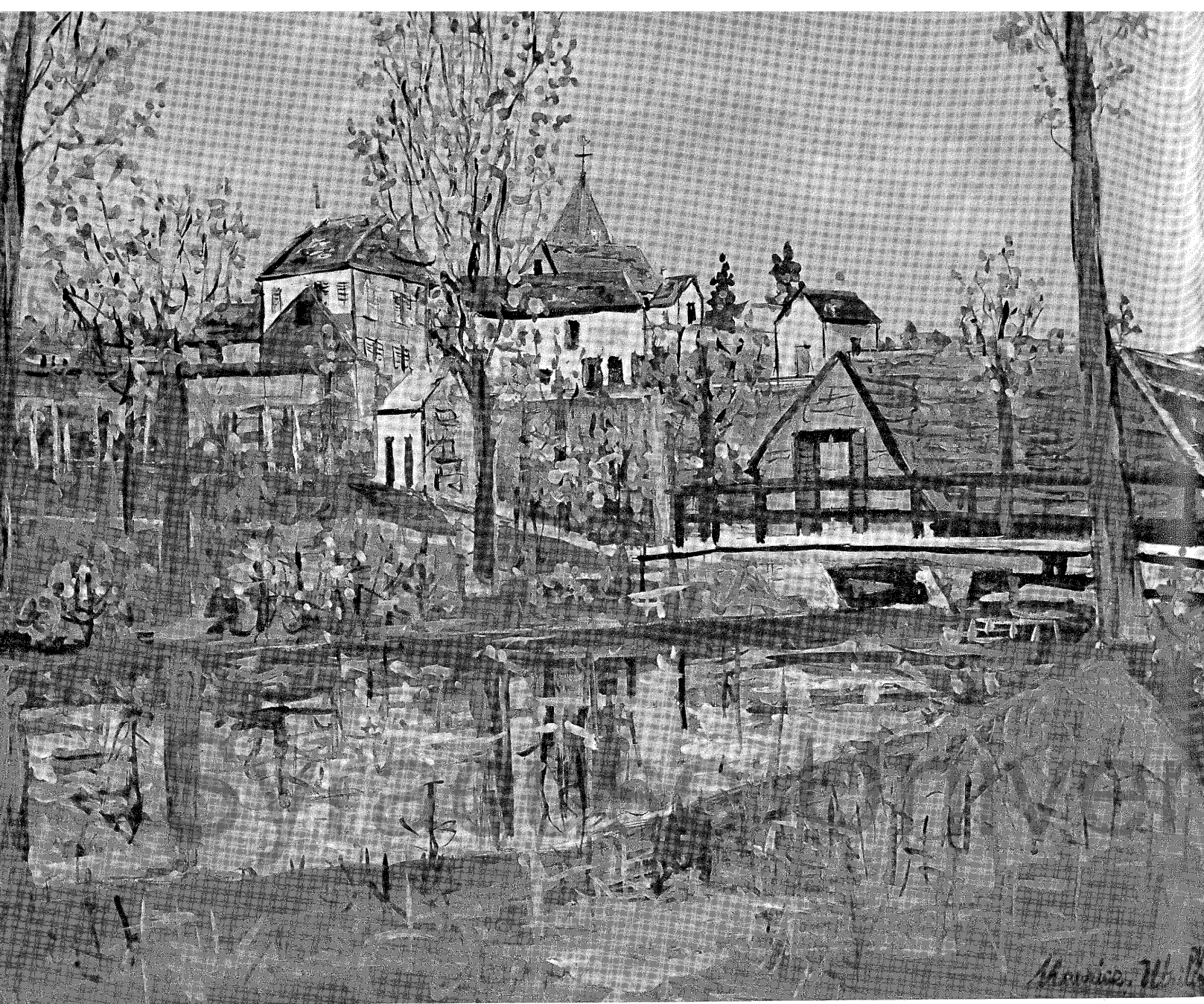
ACQUIRED 1962

VAN VEEN, STUYVESANT
American

FRAGMENTS: 3rd AVE. EL

Gouache | 11½ x 13¾"

GIFT OF LIVING ARTS FOUNDATION | 1964



UTRILLO, MAURICE
MARGEN, VUE D'ENSEMBLE



VANDER SLUIS, GEORGE
EARTH GREEN

VARGO, JOHN
American, born 1925
EARLY SPRING | 1964
Watercolor | 20 x 28"
GIFT OF THE ARTIST | 1964

VIBERT, JEAN GEORGE
French, 1840-1902
THE CARDINAL ARRIVING AT THE PALACE
Oil | 29 x 37"
GIFT OF GEORGE ARENTS

VUILLARD, AMBROISE
French, 1868-1940
FEMMES ASSISES
Pastel | 26 x 29½"
GIFT OF ARNOLD GRANT | 1953

WACHTEL, MARION KAVANAUGH
American, born 1875
EVENING, SAN GABRIEL VALLEY
Watercolor | 24 x 32"
GIFT OF GEORGE MAXWELL

WEBER, MAX
American, born Russia, 1881-1961
* THE PICTURE ADMIRERS | 1952
Oil | 25 x 30"
GIVEN ANONYMOUSLY | 1960

WEDDERSPOON, RICHARD GIBSON
American, born 1890 (S.U. 1915)
LIFE BOAT
Oil | 22 x 29"

WEEKS, EDWIN
American, 1849-1903
INDIAN PRINCE AND PARADE CEREMONY
Oil | 30 x 20½"
GIFT OF GEORGE ARENTS

WELLS, NEWTON ALONZO
American, 1852-1923
REV. FRANCIS ROOT | 1888
Oil | 48½ x 28"
ACQUIRED 1896

HON. DAVID DECKER | 1889
Oil | 30 x 25"
ACQUIRED 1896

DR. ALEXANDER WINCHELL
Oil | 57½ x 35¼"
ACQUIRED 1896

DR. CHARLES N. SIMS | 1893
Oil | 57½ x 35¼"
ACQUIRED 1896

THOMAS W. DURSTON
Oil | 30 x 25"
ACQUIRED 1896

WENSLEY, JANET
American (S.U. 1948)
ARCHBOLD GYMNASIUM FIRE OF 1952
Watercolor | 11 x 9½"
ACQUIRED 1956

WESTFALL, SIGRID
American, born 1914 (S.U. 1936)
GIRL WITH FLOWERS | 1955
Gouache | 20½ x 13½"

WHIFFEN, F.
NORTH SARASOTA BAY
Oil on canvas board | 16 x 20"
GIFT OF MRS. F. WHIFFEN

WHITAKER, FREDERIC
American, born 1891
ROYAL TEMPLE OF DIANA, NÎMES, FRANCE
Watercolor | 26½ x 20¾"
GIFT OF MRS. ANNA HYATT HUNTINGTON | 1963

WILSON, DOUGLAS
American, born 1916
EDGARTOWN GULLS | 1949
Watercolor | 18 x 22"
ACQUIRED 1949

SEASIDE SUNBURST
Watercolor | 18½ x 23"
ACQUIRED 1953



WEBER, MAX
THE PICTURE ADMIRERS

SUNBURST—MORNING
Watercolor | 17¼ x 22¼"
ACQUIRED 1953

WILSON, SOL
American, born Poland, 1896
BLEAK COAST
Oil | 30 x 40"
ACQUIRED 1962
THE HIDDEN SUN
Oil | 30 x 24"
ACQUIRED 1962

WINES, JAMES
American, born 1932 (S.U. 1955)
VOODOO III | 1962
Collage | 26 x 19"
GIFT OF THE ARTIST | 1963

WOLCOTT, HAROLD C.
American
LEW CARR
Oil | 29½ x 23½"

WORMS, JULES
French, 1832-1914
VILLAGE PRIEST ON A DONKEY
Oil on panel | 18½ x 15¼"
GIFT OF GEORGE ARENTS

WUERMER, CARL
American, born Germany, 1900
VILLAGE IN WINTER
Oil | 24½ x 30"
GIFT OF ARNOLD GRANT | 1957

YEKTAI, MANOUCHER
American, born Iran, 1922
ABSTRACTION 1951
Oil | 52½ x 40"
GIFT OF SIMON ASKIN | 1964

ZERBE, KARL
American, born Germany, 1903
*THE FORTUNE SELLER | 1948
Encaustic | 22½ x 28¼"
ACQUIRED 1960
DIESEL ENGINE NO. 4 | 1951
Polymer tempera | 54 x 38"
ACQUIRED 1956
ARCHAIC ACTOR
Gouache | 36 x 17¾"
GIFT OF JACOB SCHULMAN | 1959

ZIEM, FELIX
French, 1821-1911
VIEW OF VENICE
Oil | 23 x 30"
GIFT OF GEORGE ARENTS



* JUDGMENT OF SOLOMON | Flemish, 16th century
Tapestry | 93 x 101" | End Paper
GIFT OF PROF. AND MRS. M. PETER PIENING | 1964



ZERBE, KARL
THE FORTUNE SELLER



CRUCIFIX | French, 16th century

ANGELO, DOMENICK

American, born 1925

HEAD OF GANDHI | 1958

Bronze | 13" high

ACQUIRED 1959

DR. FINLA GOFF CRAWFORD | 1960

Bronze | 16" high

GIFT OF MAXWELL SCHOOL
OF CITIZENSHIP FACULTY | 1960

ANONYMOUS

BUST OF DEAN COMFORT | ca. 1890

Bronze | 21" high

CAST IN 1963

CRUSADER AND ANGEL | 19th century

Bronze | 21½" high

GIFT OF ALLEN WILLIAM KELLER | 1961

*CRUCIFIX | French, 16th century

Gold plated copper on wood core | 15" high

GIFT OF PROF. AND MRS. M. PETER PIENING | 1962

HEAD, COPY OF GREEK ORIGINAL (Polycleitus) | Late Roman

Bronze | Height, 14½" | Cover

GIFT OF PROF. AND MRS. M. PETER PIENING | 1964

ST. PAUL | Spanish, 18th century

Wood | 20" high

VENUS GENETRIX | 19th century

Marble | 22" high

GIFT OF MRS. ANDREW TELFER | 1962

BERKE, ERNEST

American

BUST OF CRAZY HORSE

Plaster | 16½" high

GIFT OF CARL HAVERLIN | 1964

MARI SANDOZ COLLECTION

BERTOIA, HARRY

American, born Italy, 1915

*SYRACUSE NOVA | 1961

Bronze and Steel

GIFT OF CHI OMEGA SORORITY,
UPSILON ALPHA CHAPTER | 1961

BOURDELLE, ÉMILE-ANTOINE

French, 1861-1929

*TRAGIC MASK OF BEETHOVEN | 1901

Bronze | 30¾" high

ACQUIRED 1963

CHEVRÉ, PAUL ROMAIN

French, late 19th century

COMBAT DE COQS

Bronze | 31" high

GIFT OF RAY T. ADAMS IN MEMORY
OF MRS. ADAMS | 1960

CONKEY, S.

American

J. DORMAN STEELE

Bronze | 29" high

ACQUIRED 1888

DAVIDSON, JO

American, 1883-1952

MARSHAL FOCH | 1918

Bronze | 19" high

GIFT OF HUNTINGTON HARRIS | 1962

DOROTHY THOMPSON | 1941

Bronze | 13" high

GIFT OF MRS. DOROTHY THOMPSON KOPF | 1961

EAVES, WINSLOW BRYAN

American, born 1922

STUDY FOR THE MONUMENT TO THE
UNKNOWN POLITICAL PRISONER | 1952

Bronze | 21" high

GIVEN ANONYMOUSLY | 1956

ROOM DIVIDER | Flint Hall | 1956

Welded steel | 3'4" x 11'6"

ACQUIRED 1956



JURDELLE, ÉMILE-ANTOINE
MASK OF BEETHOVEN



HUNTINGTON, ANNA HYATT
SYBIL

FRICKE, EDWARD
American, born 1919
CONSTRUCTION | 1954
Watson Hall dining room
Welded steel, polychromed | 6' x 10'
ACQUIRED | 1954

GUTSELL, H. S.
American
GEORGE FISK COMFORT | ca. 1885
Plaster | 21" high

HARRAH, JANE
WILLIS HOLYOAKE BOOTH (1874-1958)
Bronze | 16" high
GIFT OF THE BOOTH FOUNDATION | 1963

HILLYER, JEANNE HINTERNESCH DUPLAIX
American, born 1895
ROBERT HILLYER | 1953
Bronze | 13½" high
GIFT OF MRS. ROBERT HILLYER | 1964

ROBERT FROST | ca. 1955
Terracotta | 8" high
GIFT OF MRS. ROBERT HILLYER | 1964

HOUDON, JEAN ANTOINE
French, 1741-1828
GEORGE WASHINGTON
Bronze | 80" high

HUNTINGTON, ANNA HYATT
American, born 1876
ARCHER M. HUNTINGTON | 1924
Bronze | 23½" high
GIFT OF THE ARTIST | 1960

DIANA | 1932
Bronze | 99" high
GIFT OF ARCHER M. HUNTINGTON | 1932

DON QUIXOTE | 1946
Bronze | 23" high
GIFT OF THE ARTIST | 1960

QUEEN ISABELLA ON MULEBACK | 1959
Bronze | 20" high
GIFT OF THE ARTIST | 1960

*SYBIL LUDINGTON ON HORSEBACK | 1959
Bronze | 17" high
GIFT OF THE ARTIST | 1960

*THE YOUNG LINCOLN | 1963
Bronze | 18" high
GIFT OF THE ARTIST | 1964

KAISH, LUISE MEYERS
American, born 1925 (S.U. 1946)
SALTINE WARRIOR | 1951
Bronze | 120" high
GIFT OF THE CLASS OF 1951

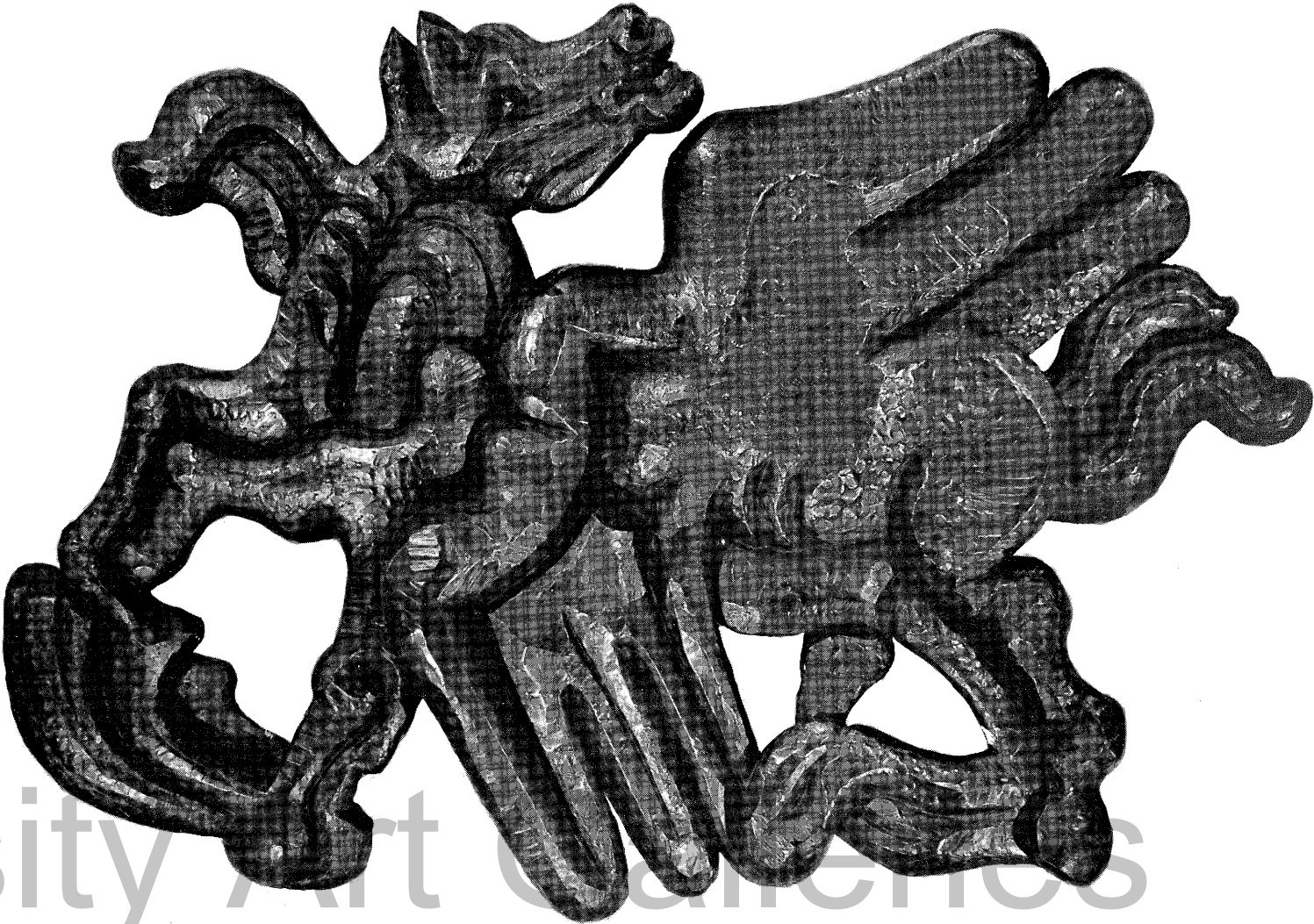
KITSON, HENRY HUDSON
English
ANNA HYATT HUNTINGTON | ca. 1895
Bronze | 11½" high
GIFT OF MRS. ANNA HYATT HUNTINGTON | 1963

LIPCHITZ, JACQUES
American, born Lithuania 1891
*BIRTH OF THE MUSES | 1964
Bronze | 5' x 7'6"
Newhouse Communications Center
ACQUIRED 1964

MEŠTROVIĆ, IVAN
American, born Croatia, 1883-1962
MADONNA AND CHILD | 1928
Diorite | 37" high
ACQUIRED 1955

MUSICAL ANGEL | 1930
Mahogany relief | 64½ x 16¾"
ACQUIRED 1962

MARY MAGDALENE UNDER THE CROSS | 1941
Mahogany relief | 44 x 22"
ACQUIRED 1962



LIPCHITZ, JACQUES
BIRTH OF THE MUSES



HUNTINGTON, ANNA HYATT
THE YOUNG LINCOLN



MEŠTROVIĆ, IVAN
SUPPLICANT PERSEPHONE

Syracuse University Art Galleries

JOB | 1945
Bronze | 49 x 40"
ACQUIRED 1955

*SUPPLICANT PERSEPHONE | 1945
Bronze | 106" high
GIFT OF THE CLASS OF 1955

CROATIAN RHAPSODY | 1947
Marble | 36" high
ACQUIRED 1953

SOCRATES AND DISCIPLES | 1953
Bronze relief | 18 x 29"
GIFT OF CHANCELLOR WILLIAM P. TOLLEY | 1955

CHANCELLOR WILLIAM P. TOLLEY | 1955
Bronze | 23" high
ACQUIRED 1955

VIRGIN, CHILD, ST. ELIZABETH AND ST. JOHN | 1953
Mahogany relief | 48 x 35½"
ACQUIRED 1962

MITCHELL, GURNSEY
French, 1854-1921
YOUNG GIRL WITH WINDBLOWN DRAPERY | 1893
Lead | 51" high

PLATT, ELEANOR
American, born 1910
CHANCELLOR WILLIAM PEARSON TOLLEY | 1960
Bronze | 21" high
GIFT OF TRUSTEES OF SYRACUSE UNIVERSITY | 1960

RIESTER, DOROTHY
American, born 1916
ABSTRACT FORM | 1955
Welded steel | 59 x 76 x 32"
ACQUIRED 1955

ROOD, JOHN
American, born 1902
*EARTH FIGURE | 1958
Bronze | 17" high
GIFT OF THE ATKINSON FOUNDATION | 1959

ROYSHER, HUDSON
American, born 1911
THE SYRACUSE UNIVERSITY CHARTER MACE | 1959
Sterling Silver | 42" long
GIFT OF DR. GORDON D. HOOPLE | 1959

TEICHMAN, SABINA
American, born 1905
MOTHER AND DAUGHTER | 1963
Bronze | 24" high
GIFT OF THE ARTHUR MURRAY FOUNDATION | 1964

WINES, JAMES
American, born 1932 (S.U. 1955)
*MONAD III | 1961
Bronze | h. 11 x w. 15 x l. 21"
ACQUIRED 1963

WINGATE, ARLINE
American, born 1906
UNIVERSALIS | 1960
Bronze | 12" high
GIFT OF HOWARD HIRSCH | 1963

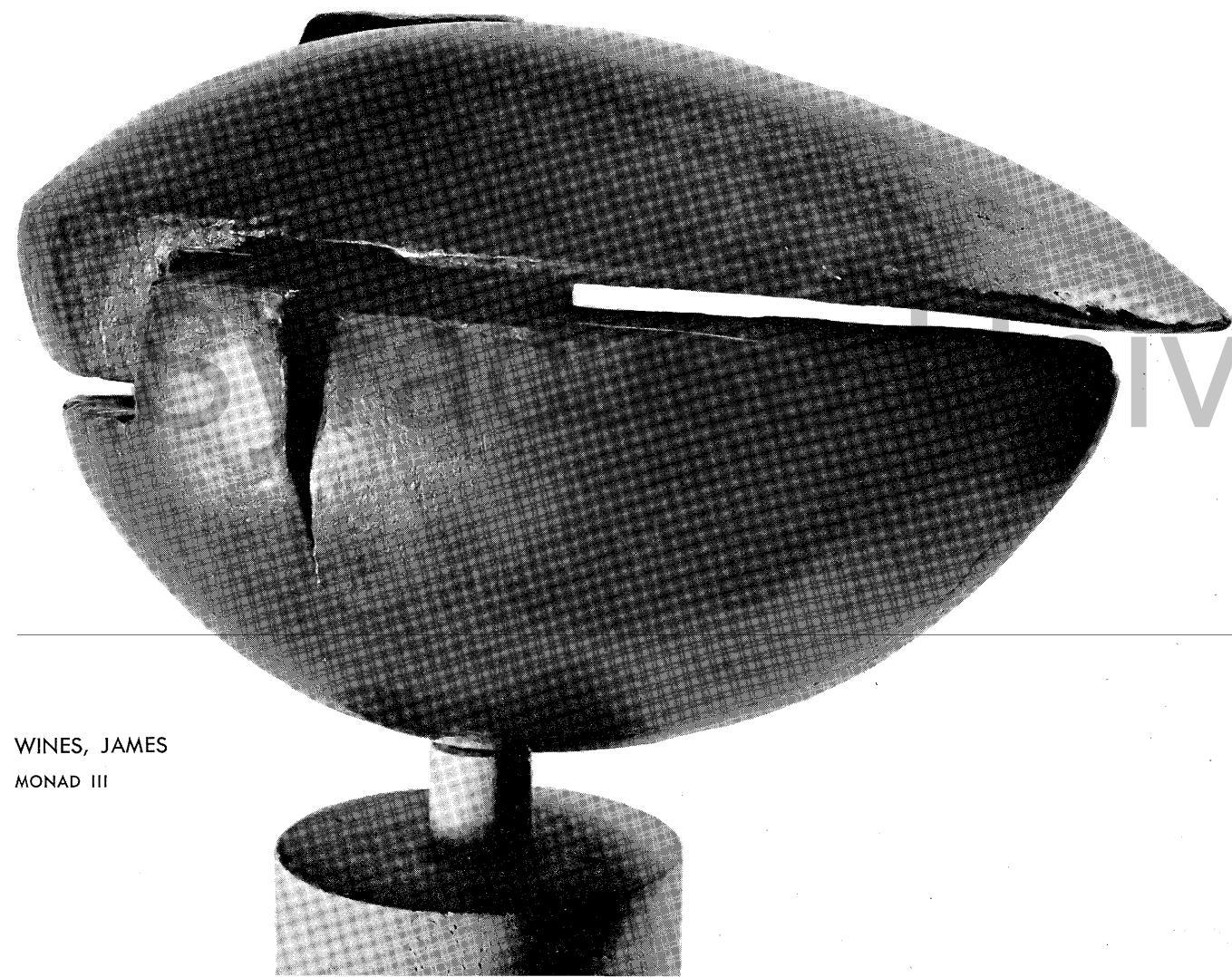
ZAJAC, JACK
American, born 1929
*DEPOSITION NO. 2 | 1960
Bronze | 20" high
GIFT OF JACOB SCHULMAN | 1960

ZORACH, WILLIAM
American, born Russia, 1887
*MOTHER AND CHILD | 1927-1930
Bronze | 66" high
ACQUIRED 1963

*HEAD OF MICHELANGELO | 1958
Granite | 14" high
ACQUIRED 1958



ROOD, JOHN
EARTH FIGURE



WINES, JAMES
MONAD III



ZAJAC, JACK
DEPOSITION NO. 2



ZORACH, WILLIAM
HEAD OF MICHELANGELO



ZORACH, WILLIAM
MOTHER AND CHILD

Special Collections, already existing or in process of organization, for which catalogs are planned in connection with future exhibitions.

THE ADOLPH BOLM COLLECTION OF BALLET DESIGNS

CONTEMPORARY AMERICAN CERAMICS

CONTEMPORARY JAPANESE DESIGN

CONTEMPORARY NORWEGIAN DESIGN

CONTEMPORARY SWEDISH DESIGN

THE JOHN R. FOX COLLECTION OF KOREAN CERAMICS

THE MORRIS MESSING COLLECTION OF ETRUSCAN POTTERY

THE FRANK MILLER COLLECTION OF PRINTS

PERUVIAN CERAMICS AND POPULAR ARTS

THE RUTH RANDALL COLLECTION OF CONTEMPORARY JAPANESE CERAMICS
(published 1962)

THE ELGIN SHERK COLLECTION OF PERSIAN TEXTILES

THE EUGENE RANDOLPH AND GRACE HOWARD SMITH COLLECTION OF
DECORATIVE ARTS

THE ESTHER BAKER STEELE COLLECTION OF ANCIENT GREEK OBJECTS

THE HELEN FOWLER MOORE COLLECTION OF TIFFANY GLASS

THE WALDEMAR COLLECTION: DECORATIVE ARTS OF THE 18th & 19th CENTURIES

THE CLOUD WAMPLER COLLECTION OF PRINTS

THE WOLFF-LEAVENWORTH COLLECTION OF ENGRAVED PORTRAITS OF
BRITISH AND EUROPEAN SCIENTISTS

THE WORDEN COLLECTION OF IVORIES



THE RUTH RANDALL COLLECTION OF CONTEMPORARY JAPANESE CERAMICS



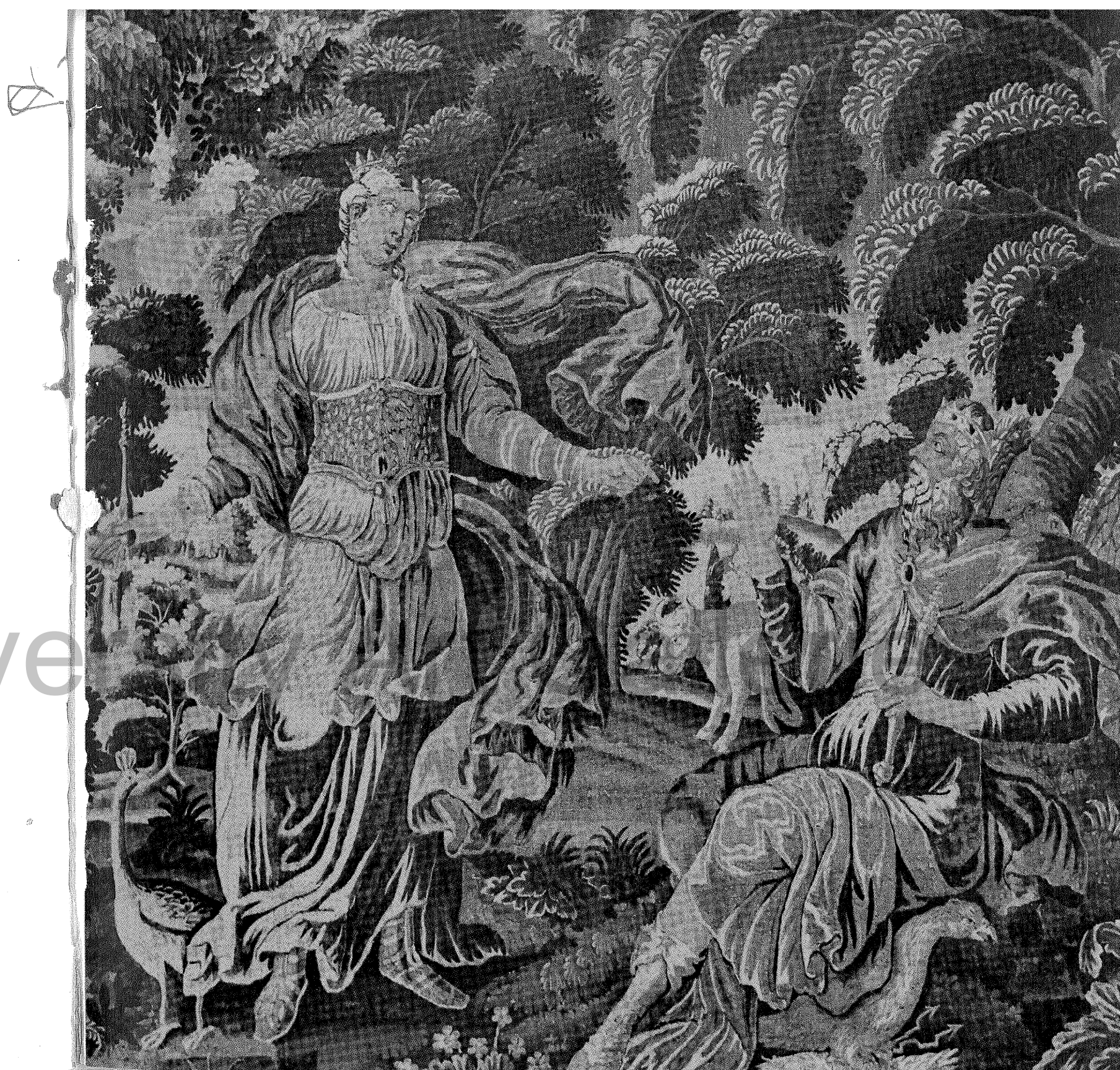
ADAMS, RAY T.—75
ADAMS, MRS. WAYMAN—19
ALLIS, MRS. WILLIAM E.—24
ANONYMOUS GIFTS—28, 31, 36, 53, 60, 70, 75
ARENTS, GEORGE—19, 20, 24, 26, 30, 31, 34, 36, 37, 39, 43, 44, 46, 55, 59, 60, 65, 67, 70, 72
ARENTS, GEORGE, JR.—59
ASKIN, SIMON—46, 72
ATKINSON FOUNDATION—82
BENNETT, MRS. GEORGE T.—19
BOLM, MRS. BEATA—88
BOOTH FOUNDATION—78
BOSA, LOUIS—20
BURGESS, MRS. JOSEPH—24
BURKE, PROF. AINSLIE—24
BYRNE, EDWARD M. —59
CARR, JAMES F.—19
CHI OMEGA SORORITY, UPSILON ALPHA CHAPTER—75
CHRIST-JANER, ALBERT W.—28
CLASS OF 1936—67
CLASS OF 1938—47
CLASS OF 1951—78
CLASS OF 1955—78
COHN, ERICH—39
COLLETTE, PROF. ALFRED T.—39
COOK, HOWARD—28
CRAFER, DR. T. W. B., ESTATE OF—34
CRANE, MISS EDITH—19
CROUSE, JACOB—20
CROWN, HENRY—28
CUNNINGHAM, JOHN—19

DAVID-WEILL, PIERRE—31
DIETZ, GERRY—19, 39
DUNAIF, DR. AND MRS. SAM—50
EGGLESTON, WARD—30, 31, 44
ELY, MISS ESTHER B.—55
FACULTY, DEPARTMENT OF ZOOLOGY—39
FACULTY, MAXWELL SCHOOL OF CITIZENSHIP—50, 75
FALK, MISS MAJORIE—51
FOX, COL. JOHN R.—88
GAMMA PHI BETA SORORITY, ALPHA CHAPTER—65
GRANT, ARNOLD—19, 20, 24, 30, 47, 53, 59, 60, 65, 67, 70, 72
GREENE, PROF. BRUNO—55
GUTTAG, IRWIN—30, 34, 46, 59
GUTTAG FOUNDATION, THE IRWIN AND MARJORIE—47
HAFT, MORRIS W. —36, 44
HAHN, MR. AND MRS. MAURICE—28, 30, 51
HARRIMAN, AVERELL—46, 53
HARRIS, HUNTINGTON—43, 75
HATCH, JOHN DAVIS—31
HAVERLIN, CARL (MARI SANDOZ COLLECTION)—75
HEKKING, WILLIAM—36
HILL, MRS. ROSWELL STONE—37
HILLYER, MRS. ROBERT—78
HIRSCH, HOWARD—82
HOOPLE, DR. GORDON D.—82
HUNTINGTON, MRS. ANNA HYATT—70, 78
HUNTINGTON, ARCHER M.—78
JOURNALISM ALUMNI ASSOCIATION, SCHOOL OF—37
KAHN, JOSEPH—26, 30, 37
KELLER, ALLEN WILLIAM—75
KOPF, MRS. DOROTHY THOMPSON—39, 75

KRAFFT, WILLIAM DE—53
LEAVENWORTH, MRS. ELIAS W.—88
LEFCOURT, MR. AND MRS. IRWIN—39
LEVINSON, MRS. A. F.—43, 44
LIVING ARTS FOUNDATION—65, 67
LONGLEY, PROF. LAURANCE J.—28
LOWE FOUNDATION, THE JOE AND EMILY—44, 53, 59
McLEOD (ANNIE LOUISE) EUTHENICS FUND—50
McMORRAN, MR. AND MRS. J. BURCH—60
MARTIN FOUNDATION—24
MARX. PROF. ROBERT—46
MAXWELL, GEORGE H.—24, 34, 39, 51, 60, 70
MESSING, MORRIS—88
METHODIST FRIENDS OF BISHOP LEDDEN—67
MILLER, FRANK E.—19, 88
MOORE, MRS. C. FAY—88
MOSHER, MRS. WILLIAM E.—51
MUNROE, MRS. ALLEN—47
MURRAY FOUNDATION, THE ARTHUR—82
NEAGOË, MRS. ANNA—47, 50
NEW YORK ALUMNI ASSOCIATION—55
NEWHOUSE, MR. AND MRS. THEODORE—65
NORWAY, GOVERNMENT OF—88
ONONDAGA COUNTY BAR ASSOCIATION—67
PAUL, MRS. C. MICHAEL—24, 59, 65
PIENING, PROF. AND MRS. M. PETER—72, 75
PISKOR, VICE PRESIDENT AND MRS. FRANK P.—24
REFREGIER, ANTON—55
RENTNER, MR. AND MRS. HILLIARD N.—55
ROCKWELL, MRS. DUDLEY—37
ROSEN, SAUL—31
ROYCE, DR. ABBIE A.—65

SALZBERG, MURRAY M.—55
SARGENT, DEAN AND MRS. KENNETH—26
SCHMECKEBIER, DEAN AND MRS. LAURENCE—44, 65
SCHULMAN, JACOB—51, 72, 82
SCOTT, JEANETTE—60
SEPESHY, ZOLTAN—31
SHANKLIN, MURIEL MORGAN (MRS. JOHN F.)—60
SHERK, ELGIN—88
SILVERMAN, MR. AND MRS. SAMUEL S.—59, 65
SMITH, BISSELL PHELPS—60
SMITH, EUGENE R.—88
SMITH, LYMAN—34
SPECTOR, MR. AND MRS. JOSEPH—67
STEELE, MRS. ESTHER BAKER—88
SWEDEN, GOVERNMENT OF—88
TELFER, MRS. ANDREW—30, 43, 75
TOLLEY, CHANCELLOR WILLIAM P.—30, 46, 50, 60, 82
TRUSTEES OF SYRACUSE UNIVERSITY—82
VANDER SLUIS, PROF. GEORGE—55
VARGO, PROF. JOHN—67
WALDEMAR, DR. JOHANNA AND DR. JOHANN KERTESZ—88
WAMPLER, CLOUD—88
WARNER, COL. JACK L.—30
WEISS, BENJAMIN—43, 51, 53, 55, 65
WEISS, EDWARD H.—51
WHIFFEN, MRS. F.—70
WHITE, ERNEST—65
WHITNEY FOUNDATION, THE WILLIAM C.—43
WINES, JAMES—72
WINGATE, VICE PRESIDENT AND MRS. FRANCIS—34
WORDEN, MR. AND MRS. WHITNEY S.—88

Syracuse Unive



Syracuse Unive